

ACHTTECK

www.achtecktool.com/en

THE EXPERTS OF DIFFICULT MACHINING



Solid Carbide Drill

Drilling Tool Denomination System

D	1	06	-	03	-	03000	A	1	AP30P1	U
1	2	3	-	4	-	5	6	7	8	9

1-Tool Group	
D	Drilling

2-Generation	
1	

3-Tool Type	
06	Universal
08	Universal

4-Drilling Depth	
03	~3xDc in accordance with DIN 6537K
05	~5xDc in accordance with DIN 6537L
08	~8xDc in accordance with Achteck standard

5-Cutting Diameter		
03000	0.1181 in	3.0mm
12000	0.4720 in	12.0 mm

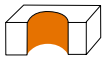
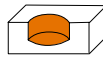

6-Shank Type	
A	DIN 6535 HA cylindrical shank

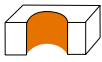
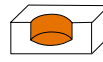



7-Coolant	
0	External coolant
1	Internal coolant

8-Grade	
AP30P1	
Without Mark: grade is not clarified	

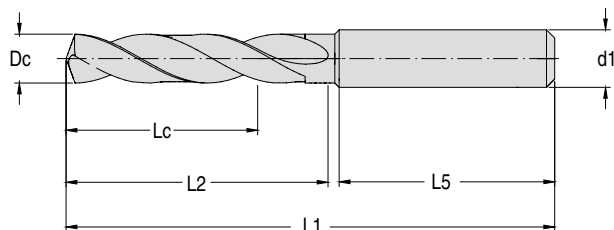
9-Application Range	
U	Universal machining P. K. N

Product Overview

External coolant		
Machining application		
	① Through hole	② Blind hole
Drilling depth	3xDc	5xDc
Series	D106	D106
Standard	DIN 6537 K	DIN 6537 L
Dia. Range(in)	0.1181 ~0.7874	0.1181 ~0.7874
Stock list	P309	P313
		

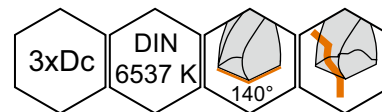
Internal coolant			
Machining application			
	① Through hole	② Blind hole	
Drilling depth	3xDc	5xDc	8xDc
Series	D106	D106	D108
Standard	DIN 6537 K	DIN 6537 L	
Dia. Range(in)	0.1181 ~0.6300	0.1181 ~0.6300	0.1181 ~0.6300
Stock list	P317	P321	P325
			

Solid Carbide Drill D106 with External Coolant 3xDc



P	M	K	N	S	H
••		••	••		

••1st choice ●2nd choice



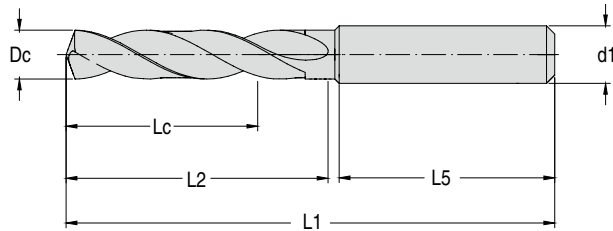
Product code	Dc(m7) mm	Dc in	Dc inch/No.	Lc in	L1 in	L2 in	L5 in	d1(h6) in	stock
D106-03-03000A0 AP30P1U	3.000	0.1181		0.551	2.441	0.787	1.417	0.157	●
D106-03-03100A0 AP30P1U	3.100	0.1220		0.551	2.441	0.787	1.417	0.157	●
D106-03-03175A0 AP30P1U	3.175	0.1250	1/8"	0.551	2.441	0.787	1.417	0.157	●
D106-03-03200A0 AP30P1U	3.200	0.1260		0.551	2.441	0.787	1.417	0.157	●
D106-03-03250A0 AP30P1U	3.250	0.1280		0.551	2.441	0.787	1.417	0.157	○
D106-03-03300A0 AP30P1U	3.300	0.1299		0.551	2.441	0.787	1.417	0.157	●
D106-03-03400A0 AP30P1U	3.400	0.1339		0.551	2.441	0.787	1.417	0.157	○
D106-03-03500A0 AP30P1U	3.500	0.1378		0.551	2.441	0.787	1.417	0.157	●
D106-03-03572A0 AP30P1U	3.572	0.1406	9/64"	0.551	2.441	0.787	1.417	0.157	○
D106-03-03600A0 AP30P1U	3.600	0.1417		0.551	2.441	0.787	1.417	0.157	●
D106-03-03650A0 AP30P1U	3.650	0.1437		0.551	2.441	0.787	1.417	0.157	○
D106-03-03700A0 AP30P1U	3.700	0.1457		0.551	2.441	0.787	1.417	0.157	●
D106-03-03800A0 AP30P1U	3.800	0.1496		0.669	2.598	0.945	1.417	0.157	○
D106-03-03900A0 AP30P1U	3.900	0.1535		0.669	2.598	0.945	1.417	0.157	●
D106-03-03969A0 AP30P1U	3.969	0.1563	5/32"	0.669	2.598	0.945	1.417	0.157	●
D106-03-04000A0 AP30P1U	4.000	0.1575		0.669	2.598	0.945	1.417	0.157	●
D106-03-04100A0 AP30P1U	4.100	0.1614		0.669	2.598	0.945	1.417	0.236	○
D106-03-04200A0 AP30P1U	4.200	0.1654		0.669	2.598	0.945	1.417	0.236	●
D106-03-04300A0 AP30P1U	4.300	0.1693		0.669	2.598	0.945	1.417	0.236	○
D106-03-04366A0 AP30P1U	4.366	0.1719	11/64"	0.669	2.598	0.945	1.417	0.236	○
D106-03-04400A0 AP30P1U	4.400	0.1732		0.669	2.598	0.945	1.417	0.236	○
D106-03-04500A0 AP30P1U	4.500	0.1772		0.669	2.598	0.945	1.417	0.236	●
D106-03-04600A0 AP30P1U	4.600	0.1811		0.669	2.598	0.945	1.417	0.236	○
D106-03-04650A0 AP30P1U	4.650	0.1831		0.669	2.598	0.945	1.417	0.236	○
D106-03-04700A0 AP30P1U	4.700	0.1850		0.669	2.598	0.945	1.417	0.236	○
D106-03-04763A0 AP30P1U	4.763	0.1875	3/16"	0.787	2.598	1.102	1.417	0.236	○
D106-03-04800A0 AP30P1U	4.800	0.1890		0.787	2.598	1.102	1.417	0.236	●
D106-03-04900A0 AP30P1U	4.900	0.1929		0.787	2.598	1.102	1.417	0.236	●
D106-03-05000A0 AP30P1U	5.000	0.1969		0.787	2.598	1.102	1.417	0.236	●
D106-03-05100A0 AP30P1U	5.100	0.2008		0.787	2.598	1.102	1.417	0.236	●
D106-03-05159A0 AP30P1U	5.159	0.2031	13/64"	0.787	2.598	1.102	1.417	0.236	○
D106-03-05200A0 AP30P1U	5.200	0.2047		0.787	2.598	1.102	1.417	0.236	●
D106-03-05300A0 AP30P1U	5.300	0.2087		0.787	2.598	1.102	1.417	0.236	○
D106-03-05400A0 AP30P1U	5.400	0.2126		0.787	2.598	1.102	1.417	0.236	○
D106-03-05500A0 AP30P1U	5.500	0.2165		0.787	2.598	1.102	1.417	0.236	●
D106-03-05550A0 AP30P1U	5.550	0.2185		0.787	2.598	1.102	1.417	0.236	○
D106-03-05556A0 AP30P1U	5.556	0.2187	7/32"	0.787	2.598	1.102	1.417	0.236	○
D106-03-05600A0 AP30P1U	5.600	0.2205		0.787	2.598	1.102	1.417	0.236	○
D106-03-05700A0 AP30P1U	5.700	0.2244		0.787	2.598	1.102	1.417	0.236	○
D106-03-05750A0 AP30P1U	5.750	0.2264		0.787	2.598	1.102	1.417	0.236	○
D106-03-05800A0 AP30P1U	5.800	0.2283		0.787	2.598	1.102	1.417	0.236	●
D106-03-05900A0 AP30P1U	5.900	0.2323		0.787	2.598	1.102	1.417	0.236	●
D106-03-05953A0 AP30P1U	5.953	0.2344	15/64"	0.787	2.598	1.102	1.417	0.236	●
D106-03-06000A0 AP30P1U	6.000	0.2362		0.787	2.598	1.102	1.417	0.236	●

Special product can be ordered

Marked: ● Stocked ○ Limited-stock

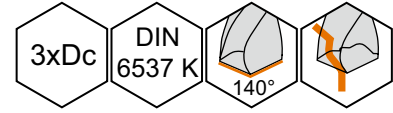
Solid Carbide Drill

Solid Carbide Drill D106 with External Coolant 3xDc



P	M	K	N	S	H
••		••	••		

● 1st choice ● 2nd choice

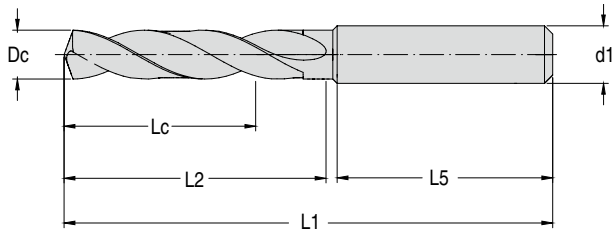


Product code	Dc(m7) mm	Dc in	Dc inch/No.	Lc in	L1 in	L2 in	L5 in	d1(h6) in	stock
D106-03-06100A0 AP30P1U	6.100	0.2402		0.945	3.110	1.614	1.417	0.315	○
D106-03-06200A0 AP30P1U	6.200	0.2441		0.945	3.110	1.614	1.417	0.315	○
D106-03-06300A0 AP30P1U	6.300	0.2480		0.945	3.110	1.614	1.417	0.315	○
D106-03-06350A0 AP30P1U	6.350	0.2500	1/4"	0.945	3.110	1.614	1.417	0.315	○
D106-03-06400A0 AP30P1U	6.400	0.2520		0.945	3.110	1.614	1.417	0.315	○
D106-03-06500A0 AP30P1U	6.500	0.2559		0.945	3.110	1.614	1.417	0.315	●
D106-03-06600A0 AP30P1U	6.600	0.2598		0.945	3.110	1.614	1.417	0.315	○
D106-03-06700A0 AP30P1U	6.700	0.2638		0.945	3.110	1.614	1.417	0.315	○
D106-03-06747A0 AP30P1U	6.747	0.2656	17/64"	0.945	3.110	1.614	1.417	0.315	○
D106-03-06800A0 AP30P1U	6.800	0.2677		0.945	3.110	1.614	1.417	0.315	●
D106-03-06900A0 AP30P1U	6.900	0.2717		0.945	3.110	1.614	1.417	0.315	●
D106-03-07000A0 AP30P1U	7.000	0.2756		0.945	3.110	1.614	1.417	0.315	●
D106-03-07100A0 AP30P1U	7.100	0.2795		1.142	3.110	1.614	1.417	0.315	○
D106-03-07144A0 AP30P1U	7.144	0.2813	9/32"	1.142	3.110	1.614	1.417	0.315	○
D106-03-07200A0 AP30P1U	7.200	0.2835		1.142	3.110	1.614	1.417	0.315	○
D106-03-07250A0 AP30P1U	7.250	0.2854		1.142	3.110	1.614	1.417	0.315	○
D106-03-07300A0 AP30P1U	7.300	0.2874		1.142	3.110	1.614	1.417	0.315	○
D106-03-07400A0 AP30P1U	7.400	0.2913		1.142	3.110	1.614	1.417	0.315	●
D106-03-07450A0 AP30P1U	7.450	0.2933		1.142	3.110	1.614	1.417	0.315	○
D106-03-07500A0 AP30P1U	7.500	0.2953		1.142	3.110	1.614	1.417	0.315	●
D106-03-07541A0 AP30P1U	7.541	0.2969	19/64"	1.142	3.110	1.614	1.417	0.315	○
D106-03-07550A0 AP30P1U	7.550	0.2972		1.142	3.110	1.614	1.417	0.315	○
D106-03-07600A0 AP30P1U	7.600	0.2992		1.142	3.110	1.614	1.417	0.315	○
D106-03-07700A0 AP30P1U	7.700	0.3031		1.142	3.110	1.614	1.417	0.315	○
D106-03-07800A0 AP30P1U	7.800	0.3071		1.142	3.110	1.614	1.417	0.315	●
D106-03-07900A0 AP30P1U	7.900	0.3110		1.142	3.110	1.614	1.417	0.315	●
D106-03-07938A0 AP30P1U	7.938	0.3125	5/16"	1.142	3.110	1.614	1.417	0.315	○
D106-03-08000A0 AP30P1U	8.000	0.3150		1.142	3.110	1.614	1.417	0.315	●
D106-03-08100A0 AP30P1U	8.100	0.3189		1.378	3.504	1.850	1.575	0.394	○
D106-03-08200A0 AP30P1U	8.200	0.3228		1.378	3.504	1.850	1.575	0.394	○
D106-03-08300A0 AP30P1U	8.300	0.3268		1.378	3.504	1.850	1.575	0.394	○
D106-03-08334A0 AP30P1U	8.334	0.3281	21/64"	1.378	3.504	1.850	1.575	0.394	○
D106-03-08400A0 AP30P1U	8.400	0.3307		1.378	3.504	1.850	1.575	0.394	○
D106-03-08500A0 AP30P1U	8.500	0.3346		1.378	3.504	1.850	1.575	0.394	●
D106-03-08600A0 AP30P1U	8.600	0.3386		1.378	3.504	1.850	1.575	0.394	●
D106-03-08700A0 AP30P1U	8.700	0.3425		1.378	3.504	1.850	1.575	0.394	○
D106-03-08731A0 AP30P1U	8.731	0.3437	11/32"	1.378	3.504	1.850	1.575	0.394	○
D106-03-08750A0 AP30P1U	8.750	0.3445		1.378	3.504	1.850	1.575	0.394	○
D106-03-08800A0 AP30P1U	8.800	0.3465		1.378	3.504	1.850	1.575	0.394	●
D106-03-08900A0 AP30P1U	8.900	0.3504		1.378	3.504	1.850	1.575	0.394	●
D106-03-09000A0 AP30P1U	9.000	0.3543		1.378	3.504	1.850	1.575	0.394	●
D106-03-09100A0 AP30P1U	9.100	0.3583		1.378	3.504	1.850	1.575	0.394	○
D106-03-09128A0 AP30P1U	9.128	0.3594	23/64"	1.378	3.504	1.850	1.575	0.394	○
D106-03-09200A0 AP30P1U	9.200	0.3622		1.378	3.504	1.850	1.575	0.394	○
D106-03-09300A0 AP30P1U	9.300	0.3661		1.378	3.504	1.850	1.575	0.394	●
D106-03-09400A0 AP30P1U	9.400	0.3701		1.378	3.504	1.850	1.575	0.394	○
D106-03-09500A0 AP30P1U	9.500	0.3740		1.378	3.504	1.850	1.575	0.394	○
D106-03-09525A0 AP30P1U	9.525	0.3750	3/8"	1.378	3.504	1.850	1.575	0.394	○

Special product can be ordered

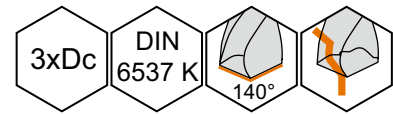
Marked: ● Stocked ○ Limited-stock

Solid Carbide Drill D106 with External Coolant 3xDc



P	M	K	N	S	H
••		••	••		

● 1st choice ● 2nd choice



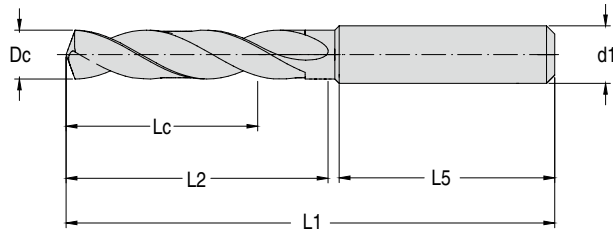
Product code	Dc(m7) mm	Dc in	Dc inch/No.	Lc in	L1 in	L2 in	L5 in	d1(h6) in	stock
D106-03-09550A0 AP30P1U	9.550	0.3760		1.378	3.504	1.850	1.575	0.394	○
D106-03-09600A0 AP30P1U	9.600	0.3780		1.378	3.504	1.850	1.575	0.394	○
D106-03-09700A0 AP30P1U	9.700	0.3819		1.378	3.504	1.850	1.575	0.394	○
D106-03-09800A0 AP30P1U	9.800	0.3858		1.378	3.504	1.850	1.575	0.394	●
D106-03-09900A0 AP30P1U	9.900	0.3898		1.378	3.504	1.850	1.575	0.394	●
D106-03-09922A0 AP30P1U	9.922	0.3906	25/64"	1.378	3.504	1.850	1.575	0.394	○
D106-03-10000A0 AP30P1U	10.000	0.3937		1.378	3.504	1.850	1.575	0.394	●
D106-03-10100A0 AP30P1U	10.100	0.3976		1.575	4.016	2.165	1.772	0.472	●
D106-03-10200A0 AP30P1U	10.200	0.4016		1.575	4.016	2.165	1.772	0.472	●
D106-03-10300A0 AP30P1U	10.300	0.4055		1.575	4.016	2.165	1.772	0.472	●
D106-03-10319A0 AP30P1U	10.319	0.4063	13/32"	1.575	4.016	2.165	1.772	0.472	●
D106-03-10400A0 AP30P1U	10.400	0.4094		1.575	4.016	2.165	1.772	0.472	○
D106-03-10500A0 AP30P1U	10.500	0.4134		1.575	4.016	2.165	1.772	0.472	●
D106-03-10600A0 AP30P1U	10.600	0.4173		1.575	4.016	2.165	1.772	0.472	●
D106-03-10700A0 AP30P1U	10.700	0.4213		1.575	4.016	2.165	1.772	0.472	○
D106-03-10716A0 AP30P1U	10.716	0.4219	27/64"	1.575	4.016	2.165	1.772	0.472	○
D106-03-10800A0 AP30P1U	10.800	0.4252		1.575	4.016	2.165	1.772	0.472	●
D106-03-10900A0 AP30P1U	10.900	0.4291		1.575	4.016	2.165	1.772	0.472	○
D106-03-11000A0 AP30P1U	11.000	0.4331		1.575	4.016	2.165	1.772	0.472	●
D106-03-11100A0 AP30P1U	11.100	0.4370		1.575	4.016	2.165	1.772	0.472	○
D106-03-11113A0 AP30P1U	11.113	0.4375	7/16"	1.575	4.016	2.165	1.772	0.472	○
D106-03-11200A0 AP30P1U	11.200	0.4409		1.575	4.016	2.165	1.772	0.472	○
D106-03-11300A0 AP30P1U	11.300	0.4449		1.575	4.016	2.165	1.772	0.472	○
D106-03-11400A0 AP30P1U	11.400	0.4488		1.575	4.016	2.165	1.772	0.472	○
D106-03-11500A0 AP30P1U	11.500	0.4528		1.575	4.016	2.165	1.772	0.472	○
D106-03-11509A0 AP30P1U	11.509	0.4531	29/64"	1.575	4.016	2.165	1.772	0.472	○
D106-03-11550A0 AP30P1U	11.550	0.4547		1.575	4.016	2.165	1.772	0.472	○
D106-03-11600A0 AP30P1U	11.600	0.4567		1.575	4.016	2.165	1.772	0.472	○
D106-03-11700A0 AP30P1U	11.700	0.4606		1.575	4.016	2.165	1.772	0.472	○
D106-03-11800A0 AP30P1U	11.800	0.4646		1.575	4.016	2.165	1.772	0.472	●
D106-03-11900A0 AP30P1U	11.900	0.4685		1.575	4.016	2.165	1.772	0.472	○
D106-03-11906A0 AP30P1U	11.906	0.4687	15/32"	1.575	4.016	2.165	1.772	0.472	○
D106-03-12000A0 AP30P1U	12.000	0.4724		1.575	4.016	2.165	1.772	0.472	●
D106-03-12100A0 AP30P1U	12.100	0.4764		1.693	4.213	2.362	1.772	0.551	○
D106-03-12200A0 AP30P1U	12.200	0.4803		1.693	4.213	2.362	1.772	0.551	○
D106-03-12250A0 AP30P1U	12.250	0.4823		1.693	4.213	2.362	1.772	0.551	○
D106-03-12300A0 AP30P1U	12.300	0.4843		1.693	4.213	2.362	1.772	0.551	○
D106-03-12303A0 AP30P1U	12.303	0.4844	31/64"	1.693	4.213	2.362	1.772	0.551	○
D106-03-12400A0 AP30P1U	12.400	0.4882		1.693	4.213	2.362	1.772	0.551	○
D106-03-12500A0 AP30P1U	12.500	0.4921		1.693	4.213	2.362	1.772	0.551	●
D106-03-12600A0 AP30P1U	12.600	0.4961		1.693	4.213	2.362	1.772	0.551	○
D106-03-12700A0 AP30P1U	12.700	0.5000	1/2"	1.693	4.213	2.362	1.772	0.551	●
D106-03-12750A0 AP30P1U	12.750	0.5020		1.693	4.213	2.362	1.772	0.551	○
D106-03-12800A0 AP30P1U	12.800	0.5039		1.693	4.213	2.362	1.772	0.551	○

Special product can be ordered

Marked: ● Stocked ○ Limited-stock

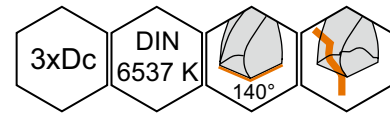
Solid Carbide Drill

Solid Carbide Drill D106 with External Coolant 3xDc



P	M	K	N	S	H
••		••	••		

● 1st choice ● 2nd choice

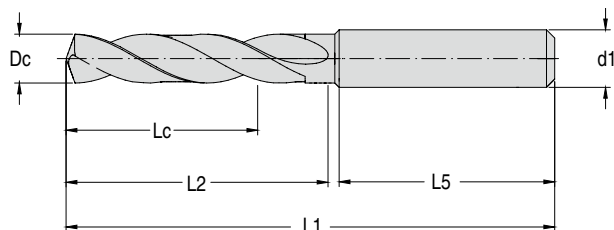


Product code	Dc(m7) mm	Dc in	Dc inch/No.	Lc in	L1 in	L2 in	L5 in	d1(h6) in	stock
D106-03-12900A0 AP30P1U	12.900	0.5079		1.693	4.213	2.362	1.772	0.551	○
D106-03-13000A0 AP30P1U	13.000	0.5118		1.693	4.213	2.362	1.772	0.551	●
D106-03-13100A0 AP30P1U	13.100	0.5157		1.693	4.213	2.362	1.772	0.551	○
D106-03-13200A0 AP30P1U	13.200	0.5197		1.693	4.213	2.362	1.772	0.551	●
D106-03-13300A0 AP30P1U	13.300	0.5236		1.693	4.213	2.362	1.772	0.551	○
D106-03-13400A0 AP30P1U	13.400	0.5276		1.693	4.213	2.362	1.772	0.551	○
D106-03-13494A0 AP30P1U	13.494	0.5313	17/32"	1.693	4.213	2.362	1.772	0.551	○
D106-03-13500A0 AP30P1U	13.500	0.5315		1.693	4.213	2.362	1.772	0.551	○
D106-03-13600A0 AP30P1U	13.600	0.5354		1.693	4.213	2.362	1.772	0.551	○
D106-03-13700A0 AP30P1U	13.700	0.5394		1.693	4.213	2.362	1.772	0.551	○
D106-03-13800A0 AP30P1U	13.800	0.5433		1.693	4.213	2.362	1.772	0.551	○
D106-03-13900A0 AP30P1U	13.900	0.5472		1.693	4.213	2.362	1.772	0.551	○
D106-03-14000A0 AP30P1U	14.000	0.5512		1.693	4.213	2.362	1.772	0.551	●
D106-03-14100A0 AP30P1U	14.100	0.5551		1.772	4.528	2.559	1.890	0.630	●
D106-03-14200A0 AP30P1U	14.200	0.5591		1.772	4.528	2.559	1.890	0.630	●
D106-03-14288A0 AP30P1U	14.288	0.5625	9/16"	1.772	4.528	2.559	1.890	0.630	○
D106-03-14300A0 AP30P1U	14.300	0.5630		1.772	4.528	2.559	1.890	0.630	○
D106-03-14400A0 AP30P1U	14.400	0.5669		1.772	4.528	2.559	1.890	0.630	○
D106-03-14500A0 AP30P1U	14.500	0.5709		1.772	4.528	2.559	1.890	0.630	●
D106-03-14600A0 AP30P1U	14.600	0.5748		1.772	4.528	2.559	1.890	0.630	●
D106-03-14700A0 AP30P1U	14.700	0.5787		1.772	4.528	2.559	1.890	0.630	●
D106-03-14750A0 AP30P1U	14.750	0.5807		1.772	4.528	2.559	1.890	0.630	○
D106-03-14800A0 AP30P1U	14.800	0.5827		1.772	4.528	2.559	1.890	0.630	○
D106-03-15000A0 AP30P1U	15.000	0.5906		1.772	4.528	2.559	1.890	0.630	●
D106-03-15100A0 AP30P1U	15.100	0.5945		1.772	4.528	2.559	1.890	0.630	○
D106-03-15200A0 AP30P1U	15.200	0.5984		1.772	4.528	2.559	1.890	0.630	○
D106-03-15300A0 AP30P1U	15.300	0.6024		1.772	4.528	2.559	1.890	0.630	○
D106-03-15500A0 AP30P1U	15.500	0.6102		1.772	4.528	2.559	1.890	0.630	●
D106-03-15600A0 AP30P1U	15.600	0.6142		1.772	4.528	2.559	1.890	0.630	○
D106-03-15700A0 AP30P1U	15.700	0.6181		1.772	4.528	2.559	1.890	0.630	●
D106-03-15800A0 AP30P1U	15.800	0.6220		1.772	4.528	2.559	1.890	0.630	●
D106-03-15875A0 AP30P1U	15.875	0.6250	5/8"	1.772	4.528	2.559	1.890	0.630	●
D106-03-15900A0 AP30P1U	15.900	0.6260		1.772	4.528	2.559	1.890	0.630	○
D106-03-16000A0 AP30P1U	16.000	0.6299		1.772	4.528	2.559	1.890	0.630	●
D106-03-16500A0 AP30P1U	16.500	0.6496		2.008	4.843	2.874	1.890	0.709	●
D106-03-17000A0 AP30P1U	17.000	0.6693		2.008	4.843	2.874	1.890	0.709	●
D106-03-17500A0 AP30P1U	17.500	0.6890		2.008	4.843	2.874	1.890	0.709	●
D106-03-18000A0 AP30P1U	18.000	0.7087		2.008	4.843	2.874	1.890	0.709	●
D106-03-18500A0 AP30P1U	18.500	0.7283		2.165	5.157	3.110	1.969	0.787	●
D106-03-19000A0 AP30P1U	19.000	0.7480		2.165	5.157	3.110	1.969	0.787	●
D106-03-20000A0 AP30P1U	20.000	0.7874		2.165	5.157	3.110	1.969	0.787	●

Special product can be ordered

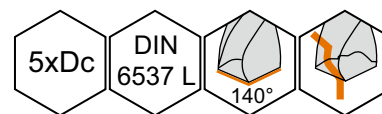
Marked: ● Stocked ○ Limited-stock

Solid Carbide Drill D106 with External Coolant 5xDc



P	M	K	N	S	H
••		••	••		

•• 1st choice • 2nd choice



Product code	Dc(m7) mm	Dc in	Dc inch/No.	Lc in	L1 in	L2 in	L5 in	d1(h6) in	stock
D106-05-03000A0 AP30P1U	3.000	0.1181		0.906	2.598	1.102	1.417	0.157	●
D106-05-03100A0 AP30P1U	3.100	0.1220		0.906	2.598	1.102	1.417	0.157	●
D106-05-03175A0 AP30P1U	3.175	0.1250	1/8"	0.906	2.598	1.102	1.417	0.157	○
D106-05-03200A0 AP30P1U	3.200	0.1260		0.906	2.598	1.102	1.417	0.157	●
D106-05-03250A0 AP30P1U	3.250	0.1280		0.906	2.598	1.102	1.417	0.157	○
D106-05-03300A0 AP30P1U	3.300	0.1299		0.906	2.598	1.102	1.417	0.157	●
D106-05-03400A0 AP30P1U	3.400	0.1339		0.906	2.598	1.102	1.417	0.157	○
D106-05-03500A0 AP30P1U	3.500	0.1378		0.906	2.598	1.102	1.417	0.157	●
D106-05-03572A0 AP30P1U	3.572	0.1406	9/64"	0.906	2.598	1.102	1.417	0.157	●
D106-05-03600A0 AP30P1U	3.600	0.1417		0.906	2.598	1.102	1.417	0.157	●
D106-05-03650A0 AP30P1U	3.650	0.1437		0.906	2.598	1.102	1.417	0.157	○
D106-05-03700A0 AP30P1U	3.700	0.1457		0.906	2.598	1.102	1.417	0.157	●
D106-05-03800A0 AP30P1U	3.800	0.1496		1.142	2.913	1.417	1.417	0.157	○
D106-05-03900A0 AP30P1U	3.900	0.1535		1.142	2.913	1.417	1.417	0.157	●
D106-05-03969A0 AP30P1U	3.969	0.1563	5/32"	1.142	2.913	1.417	1.417	0.157	●
D106-05-04000A0 AP30P1U	4.000	0.1575		1.142	2.913	1.417	1.417	0.157	●
D106-05-04100A0 AP30P1U	4.100	0.1614		1.142	2.913	1.417	1.417	0.236	○
D106-05-04200A0 AP30P1U	4.200	0.1654		1.142	2.913	1.417	1.417	0.236	●
D106-05-04300A0 AP30P1U	4.300	0.1693		1.142	2.913	1.417	1.417	0.236	○
D106-05-04366A0 AP30P1U	4.366	0.1719	11/64"	1.142	2.913	1.417	1.417	0.236	●
D106-05-04400A0 AP30P1U	4.400	0.1732		1.142	2.913	1.417	1.417	0.236	○
D106-05-04500A0 AP30P1U	4.500	0.1772		1.142	2.913	1.417	1.417	0.236	●
D106-05-04600A0 AP30P1U	4.600	0.1811		1.142	2.913	1.417	1.417	0.236	○
D106-05-04650A0 AP30P1U	4.650	0.1831		1.142	2.913	1.417	1.417	0.236	○
D106-05-04700A0 AP30P1U	4.700	0.1850		1.142	2.913	1.417	1.417	0.236	○
D106-05-04763A0 AP30P1U	4.763	0.1875	3/16"	1.378	3.228	1.732	1.417	0.236	●
D106-05-04800A0 AP30P1U	4.800	0.1890		1.378	3.228	1.732	1.417	0.236	●
D106-05-04900A0 AP30P1U	4.900	0.1929		1.378	3.228	1.732	1.417	0.236	●
D106-05-05000A0 AP30P1U	5.000	0.1969		1.378	3.228	1.732	1.417	0.236	●
D106-05-05100A0 AP30P1U	5.100	0.2008		1.378	3.228	1.732	1.417	0.236	●
D106-05-05159A0 AP30P1U	5.159	0.2031	13/64"	1.378	3.228	1.732	1.417	0.236	●
D106-05-05200A0 AP30P1U	5.200	0.2047		1.378	3.228	1.732	1.417	0.236	●
D106-05-05300A0 AP30P1U	5.300	0.2087		1.378	3.228	1.732	1.417	0.236	○
D106-05-05400A0 AP30P1U	5.400	0.2126		1.378	3.228	1.732	1.417	0.236	○
D106-05-05500A0 AP30P1U	5.500	0.2165		1.378	3.228	1.732	1.417	0.236	●
D106-05-05550A0 AP30P1U	5.550	0.2185		1.378	3.228	1.732	1.417	0.236	○
D106-05-05556A0 AP30P1U	5.556	0.2187	7/32"	1.378	3.228	1.732	1.417	0.236	●
D106-05-05600A0 AP30P1U	5.600	0.2205		1.378	3.228	1.732	1.417	0.236	○
D106-05-05700A0 AP30P1U	5.700	0.2244		1.378	3.228	1.732	1.417	0.236	○
D106-05-05800A0 AP30P1U	5.800	0.2283		1.378	3.228	1.732	1.417	0.236	●
D106-05-05900A0 AP30P1U	5.900	0.2323		1.378	3.228	1.732	1.417	0.236	●
D106-05-05953A0 AP30P1U	5.953	0.2344	15/64"	1.378	3.228	1.732	1.417	0.236	●
D106-05-06000A0 AP30P1U	6.000	0.2362		1.378	3.228	1.732	1.417	0.236	●
D106-05-06100A0 AP30P1U	6.100	0.240		1.693	3.583	2.087	1.417	0.315	○

Special product can be ordered

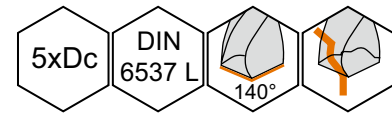
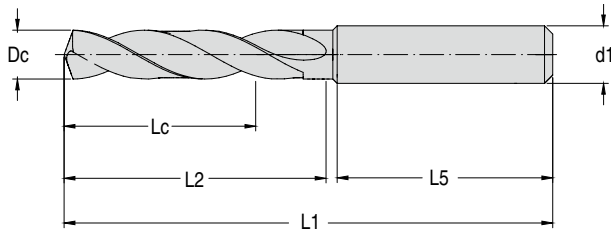
Marked: ● Stocked ○ Limited-stock

Solid Carbide Drill

Solid Carbide Drill D106 with External Coolant 5xDc

P	M	K	N	S	H
••		••	••		

•• 1st choice ● 2nd choice

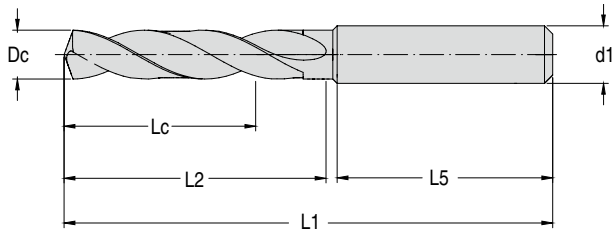


Product code	Dc(m7) mm	Dc in	Dc inch/No.	Lc in	L1 in	L2 in	L5 in	d1(h6) in	stock
D106-05-06200A0 AP30P1U	6.200	0.2402		1.693	3.583	2.087	1.417	0.315	○
D106-05-06300A0 AP30P1U	6.300	0.2441		1.693	3.583	2.087	1.417	0.315	○
D106-05-06350A0 AP30P1U	6.350	0.2480	1/4"	1.693	3.583	2.087	1.417	0.315	●
D106-05-06400A0 AP30P1U	6.400	0.2500		1.693	3.583	2.087	1.417	0.315	○
D106-05-06500A0 AP30P1U	6.500	0.2520		1.693	3.583	2.087	1.417	0.315	●
D106-05-06600A0 AP30P1U	6.600	0.2559		1.693	3.583	2.087	1.417	0.315	○
D106-05-06700A0 AP30P1U	6.700	0.2598		1.693	3.583	2.087	1.417	0.315	○
D106-05-06747A0 AP30P1U	6.747	0.2638	17/64"	1.693	3.583	2.087	1.417	0.315	●
D106-05-06800A0 AP30P1U	6.800	0.2656		1.693	3.583	2.087	1.417	0.315	●
D106-05-06900A0 AP30P1U	6.900	0.2677		1.693	3.583	2.087	1.417	0.315	●
D106-05-07000A0 AP30P1U	7.000	0.2717		1.693	3.583	2.087	1.417	0.315	●
D106-05-07100A0 AP30P1U	7.100	0.2756		1.693	3.583	2.087	1.417	0.315	○
D106-05-07144A0 AP30P1U	7.144	0.2795	9/32"	1.693	3.583	2.087	1.417	0.315	●
D106-05-07200A0 AP30P1U	7.200	0.2813		1.693	3.583	2.087	1.417	0.315	○
D106-05-07300A0 AP30P1U	7.300	0.2835		1.693	3.583	2.087	1.417	0.315	○
D106-05-07400A0 AP30P1U	7.400	0.2874		1.693	3.583	2.087	1.417	0.315	●
D106-05-07500A0 AP30P1U	7.500	0.2913		1.693	3.583	2.087	1.417	0.315	●
D106-05-07541A0 AP30P1U	7.541	0.2953	19/64"	1.693	3.583	2.087	1.417	0.315	●
D106-05-07550A0 AP30P1U	7.550	0.2969		1.693	3.583	2.087	1.417	0.315	○
D106-05-07600A0 AP30P1U	7.600	0.2972		1.693	3.583	2.087	1.417	0.315	○
D106-05-07700A0 AP30P1U	7.700	0.2992		1.693	3.583	2.087	1.417	0.315	○
D106-05-07800A0 AP30P1U	7.800	0.3031		1.693	3.583	2.087	1.417	0.315	●
D106-05-07900A0 AP30P1U	7.900	0.3071		1.693	3.583	2.087	1.417	0.315	●
D106-05-07938A0 AP30P1U	7.938	0.3110	5/16"	1.693	3.583	2.087	1.417	0.315	●
D106-05-08000A0 AP30P1U	8.000	0.3125		1.693	3.583	2.087	1.417	0.315	●
D106-05-08100A0 AP30P1U	8.100	0.3150		1.929	4.055	2.402	1.575	0.394	○
D106-05-08200A0 AP30P1U	8.200	0.3189		1.929	4.055	2.402	1.575	0.394	○
D106-05-08300A0 AP30P1U	8.300	0.3228		1.929	4.055	2.402	1.575	0.394	○
D106-05-08334A0 AP30P1U	8.334	0.3268	21/64"	1.929	4.055	2.402	1.575	0.394	●
D106-05-08400A0 AP30P1U	8.400	0.3281		1.929	4.055	2.402	1.575	0.394	○
D106-05-08500A0 AP30P1U	8.500	0.3307		1.929	4.055	2.402	1.575	0.394	●
D106-05-08600A0 AP30P1U	8.600	0.3346		1.929	4.055	2.402	1.575	0.394	●
D106-05-08700A0 AP30P1U	8.700	0.3386		1.929	4.055	2.402	1.575	0.394	○
D106-05-08731A0 AP30P1U	8.731	0.3425	11/32"	1.929	4.055	2.402	1.575	0.394	●
D106-05-08800A0 AP30P1U	8.800	0.3437		1.929	4.055	2.402	1.575	0.394	●
D106-05-08900A0 AP30P1U	8.900	0.3465		1.929	4.055	2.402	1.575	0.394	●
D106-05-09000A0 AP30P1U	9.000	0.3504		1.929	4.055	2.402	1.575	0.394	●
D106-05-09100A0 AP30P1U	9.100	0.3543		1.929	4.055	2.402	1.575	0.394	○
D106-05-09128A0 AP30P1U	9.128	0.3583	23/64"	1.929	4.055	2.402	1.575	0.394	●
D106-05-09200A0 AP30P1U	9.200	0.3594		1.929	4.055	2.402	1.575	0.394	○
D106-05-09300A0 AP30P1U	9.300	0.3622		1.929	4.055	2.402	1.575	0.394	●
D106-05-09400A0 AP30P1U	9.400	0.3661		1.929	4.055	2.402	1.575	0.394	○
D106-05-09500A0 AP30P1U	9.500	0.3701		1.929	4.055	2.402	1.575	0.394	○
D106-05-09525A0 AP30P1U	9.525	0.3740	3/8"	1.929	4.055	2.402	1.575	0.394	●

Special product can be ordered

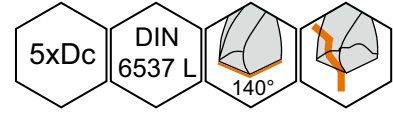
Marked: ● Stocked ○ Limited-stock

Solid Carbide Drill D106 with External Coolant 5xDc



P	M	K	N	S	H
••		••	••		

•• 1st choice • 2nd choice



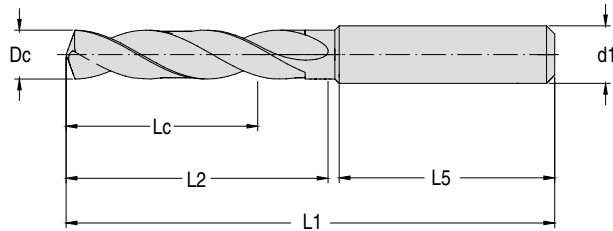
Product code	Dc(m7) mm	Dc in	Dc inch/No.	Lc in	L1 in	L2 in	L5 in	d1(h6) in	stock
D106-05-09550A0 AP30P1U	9.550	0.3760		1.929	4.055	2.402	1.575	0.394	○
D106-05-09600A0 AP30P1U	9.600	0.3780		1.929	4.055	2.402	1.575	0.394	○
D106-05-09700A0 AP30P1U	9.700	0.3819		1.929	4.055	2.402	1.575	0.394	○
D106-05-09800A0 AP30P1U	9.800	0.3858		1.929	4.055	2.402	1.575	0.394	●
D106-05-09900A0 AP30P1U	9.900	0.3898		1.929	4.055	2.402	1.575	0.394	●
D106-05-09922A0 AP30P1U	9.922	0.3906	25/64"	1.929	4.055	2.402	1.575	0.394	●
D106-05-10000A0 AP30P1U	10.000	0.3937		1.929	4.055	2.402	1.575	0.394	●
D106-05-10100A0 AP30P1U	10.100	0.3976		2.205	4.646	2.795	1.772	0.472	●
D106-05-10200A0 AP30P1U	10.200	0.4016		2.205	4.646	2.795	1.772	0.472	●
D106-05-10300A0 AP30P1U	10.300	0.4055		2.205	4.646	2.795	1.772	0.472	●
D106-05-10319A0 AP30P1U	10.319	0.4063	13/32"	2.205	4.646	2.795	1.772	0.472	○
D106-05-10400A0 AP30P1U	10.400	0.4094		2.205	4.646	2.795	1.772	0.472	○
D106-05-10500A0 AP30P1U	10.500	0.4134		2.205	4.646	2.795	1.772	0.472	●
D106-05-10600A0 AP30P1U	10.600	0.4173		2.205	4.646	2.795	1.772	0.472	●
D106-05-10700A0 AP30P1U	10.700	0.4213		2.205	4.646	2.795	1.772	0.472	○
D106-05-10716A0 AP30P1U	10.716	0.4219	27/64"	2.205	4.646	2.795	1.772	0.472	●
D106-05-10800A0 AP30P1U	10.800	0.4252		2.205	4.646	2.795	1.772	0.472	●
D106-05-10900A0 AP30P1U	10.900	0.4291		2.205	4.646	2.795	1.772	0.472	○
D106-05-11000A0 AP30P1U	11.000	0.4331		2.205	4.646	2.795	1.772	0.472	●
D106-05-11100A0 AP30P1U	11.100	0.4370		2.205	4.646	2.795	1.772	0.472	○
D106-05-11113A0 AP30P1U	11.113	0.4375	7/16"	2.205	4.646	2.795	1.772	0.472	○
D106-05-11200A0 AP30P1U	11.200	0.4409		2.205	4.646	2.795	1.772	0.472	○
D106-05-11300A0 AP30P1U	11.300	0.4449		2.205	4.646	2.795	1.772	0.472	○
D106-05-11400A0 AP30P1U	11.400	0.4488		2.205	4.646	2.795	1.772	0.472	○
D106-05-11500A0 AP30P1U	11.500	0.4528		2.205	4.646	2.795	1.772	0.472	○
D106-05-11509A0 AP30P1U	11.509	0.4531	29/64"	2.205	4.646	2.795	1.772	0.472	○
D106-05-11550A0 AP30P1U	11.550	0.4547		2.205	4.646	2.795	1.772	0.472	○
D106-05-11600A0 AP30P1U	11.600	0.4567		2.205	4.646	2.795	1.772	0.472	○
D106-05-11700A0 AP30P1U	11.700	0.4606		2.205	4.646	2.795	1.772	0.472	○
D106-05-11800A0 AP30P1U	11.800	0.4646		2.205	4.646	2.795	1.772	0.472	●
D106-05-11900A0 AP30P1U	11.900	0.4685		2.205	4.646	2.795	1.772	0.472	○
D106-05-11906A0 AP30P1U	11.906	0.4687	15/32"	2.205	4.646	2.795	1.772	0.472	○
D106-05-12000A0 AP30P1U	12.000	0.4724		2.205	4.646	2.795	1.772	0.472	●
D106-05-12100A0 AP30P1U	12.100	0.4764		2.362	4.882	3.031	1.772	0.551	○
D106-05-12200A0 AP30P1U	12.200	0.4803		2.362	4.882	3.031	1.772	0.551	○
D106-05-12250A0 AP30P1U	12.250	0.4823		2.362	4.882	3.031	1.772	0.551	○
D106-05-12300A0 AP30P1U	12.300	0.4843		2.362	4.882	3.031	1.772	0.551	○
D106-05-12303A0 AP30P1U	12.303	0.4844	31/64"	2.362	4.882	3.031	1.772	0.551	○
D106-05-12400A0 AP30P1U	12.400	0.4882		2.362	4.882	3.031	1.772	0.551	○
D106-05-12500A0 AP30P1U	12.500	0.4921		2.362	4.882	3.031	1.772	0.551	●
D106-05-12600A0 AP30P1U	12.600	0.4961		2.362	4.882	3.031	1.772	0.551	○
D106-05-12700A0 AP30P1U	12.700	0.5000	1/2"	2.362	4.882	3.031	1.772	0.551	●
D106-05-12750A0 AP30P1U	12.750	0.5020		2.362	4.882	3.031	1.772	0.551	○
D106-05-12800A0 AP30P1U	12.800	0.5039		2.362	4.882	3.031	1.772	0.551	○

Special product can be ordered

Marked: ● Stocked ○ Limited-stock

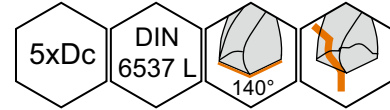
Solid Carbide Drill

Solid Carbide Drill D106 with External Coolant 5xDc



P	M	K	N	S	H
••		••	••		

•• 1st choice ● 2nd choice

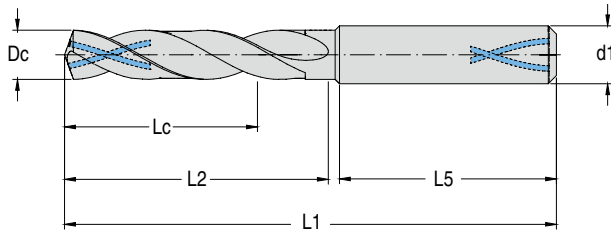


Product code	Dc(m7) mm	Dc in	Dc inch/No.	Lc in	L1 in	L2 in	L5 in	d1(h6) in	stock
D106-05-12900A0 AP30P1U	12.900	0.5079		2.362	4.882	3.031	1.772	0.551	○
D106-05-13000A0 AP30P1U	13.000	0.5118		2.362	4.882	3.031	1.772	0.551	●
D106-05-13100A0 AP30P1U	13.100	0.5157		2.362	4.882	3.031	1.772	0.551	○
D106-05-13200A0 AP30P1U	13.200	0.5197		2.362	4.882	3.031	1.772	0.551	●
D106-05-13300A0 AP30P1U	13.300	0.5236		2.362	4.882	3.031	1.772	0.551	○
D106-05-13400A0 AP30P1U	13.400	0.5276		2.362	4.882	3.031	1.772	0.551	○
D106-05-13494A0 AP30P1U	13.494	0.5313	17/32"	2.362	4.882	3.031	1.772	0.551	○
D106-05-13500A0 AP30P1U	13.500	0.5315		2.362	4.882	3.031	1.772	0.551	○
D106-05-13600A0 AP30P1U	13.600	0.5354		2.362	4.882	3.031	1.772	0.551	○
D106-05-13700A0 AP30P1U	13.700	0.5394		2.362	4.882	3.031	1.772	0.551	●
D106-05-13800A0 AP30P1U	13.800	0.5433		2.362	4.882	3.031	1.772	0.551	○
D106-05-13900A0 AP30P1U	13.900	0.5472		2.362	4.882	3.031	1.772	0.551	○
D106-05-14000A0 AP30P1U	14.000	0.5512		2.362	4.882	3.031	1.772	0.551	●
D106-05-14100A0 AP30P1U	14.100	0.5551		2.480	5.236	3.268	1.890	0.630	●
D106-05-14200A0 AP30P1U	14.200	0.5591		2.480	5.236	3.268	1.890	0.630	●
D106-05-14288A0 AP30P1U	14.288	0.5625	9/16"	2.480	5.236	3.268	1.890	0.630	○
D106-05-14300A0 AP30P1U	14.300	0.5630		2.480	5.236	3.268	1.890	0.630	○
D106-05-14400A0 AP30P1U	14.400	0.5669		2.480	5.236	3.268	1.890	0.630	○
D106-05-14500A0 AP30P1U	14.500	0.5709		2.480	5.236	3.268	1.890	0.630	●
D106-05-14600A0 AP30P1U	14.600	0.5748		2.480	5.236	3.268	1.890	0.630	●
D106-05-14700A0 AP30P1U	14.700	0.5787		2.480	5.236	3.268	1.890	0.630	●
D106-05-14750A0 AP30P1U	14.750	0.5807		2.480	5.236	3.268	1.890	0.630	○
D106-05-14800A0 AP30P1U	14.800	0.5827		2.480	5.236	3.268	1.890	0.630	○
D106-05-15000A0 AP30P1U	15.000	0.5906		2.480	5.236	3.268	1.890	0.630	●
D106-05-15100A0 AP30P1U	15.100	0.5945		2.480	5.236	3.268	1.890	0.630	○
D106-05-15200A0 AP30P1U	15.200	0.5984		2.480	5.236	3.268	1.890	0.630	○
D106-05-15300A0 AP30P1U	15.300	0.6024		2.480	5.236	3.268	1.890	0.630	○
D106-05-15500A0 AP30P1U	15.500	0.6102		2.480	5.236	3.268	1.890	0.630	●
D106-05-15600A0 AP30P1U	15.600	0.6142		2.480	5.236	3.268	1.890	0.630	○
D106-05-15700A0 AP30P1U	15.700	0.6181		2.480	5.236	3.268	1.890	0.630	●
D106-05-15800A0 AP30P1U	15.800	0.6220		2.480	5.236	3.268	1.890	0.630	●
D106-05-15875A0 AP30P1U	15.875	0.6250	5/8"	2.480	5.236	3.268	1.890	0.630	●
D106-05-15900A0 AP30P1U	15.900	0.6260		2.480	5.236	3.268	1.890	0.630	○
D106-05-16000A0 AP30P1U	16.000	0.6299		2.480	5.236	3.268	1.890	0.630	●
D106-05-16500A0 AP30P1U	16.500	0.6496		2.795	5.630	3.661	1.890	0.709	●
D106-05-17000A0 AP30P1U	17.000	0.6693		2.795	5.630	3.661	1.890	0.709	●
D106-05-17500A0 AP30P1U	17.500	0.6890		2.795	5.630	3.661	1.890	0.709	●
D106-05-18000A0 AP30P1U	18.000	0.7087		2.795	5.630	3.661	1.890	0.709	●
D106-05-18500A0 AP30P1U	18.500	0.7283		3.031	6.024	3.976	1.969	0.787	●
D106-05-19000A0 AP30P1U	19.000	0.7480		3.031	6.024	3.976	1.969	0.787	●
D106-05-20000A0 AP30P1U	20.000	0.7874		3.031	6.024	3.976	1.969	0.787	●

Special product can be ordered

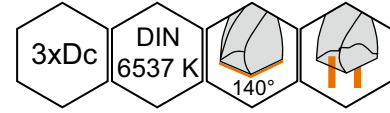
Marked: ● Stocked ○ Limited-stock

Solid Carbide Drill D106 with Internal Coolant 3xDc



P	M	K	N	S	H
••	•	••	••	•	•

•• 1st choice • 2nd choice



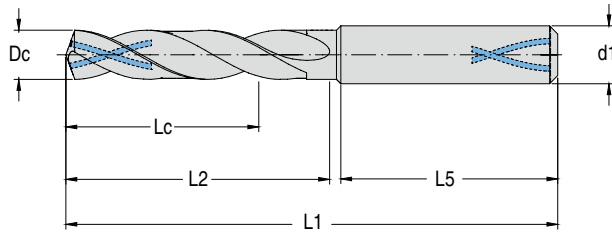
Product code	Dc(m7) mm	Dc in	Dc inch/No.	Lc in	L1 in	L2 in	L5 in	d1(h6) in	stock
D106-03-03000A1 AP30P1U	3.000	0.1181		0.551	2.441	0.787	1.417	0.157	●
D106-03-03100A1 AP30P1U	3.100	0.1220		0.551	2.441	0.787	1.417	0.157	●
D106-03-03175A1 AP30P1U	3.175	0.1250	1/8"	0.551	2.441	0.787	1.417	0.157	○
D106-03-03200A1 AP30P1U	3.200	0.1260		0.551	2.441	0.787	1.417	0.157	●
D106-03-03250A1 AP30P1U	3.250	0.1280		0.551	2.441	0.787	1.417	0.157	○
D106-03-03300A1 AP30P1U	3.300	0.1299		0.551	2.441	0.787	1.417	0.157	●
D106-03-03400A1 AP30P1U	3.400	0.1339		0.551	2.441	0.787	1.417	0.157	○
D106-03-03500A1 AP30P1U	3.500	0.1378		0.551	2.441	0.787	1.417	0.157	●
D106-03-03572A1 AP30P1U	3.572	0.1406	9/64"	0.551	2.441	0.787	1.417	0.157	○
D106-03-03600A1 AP30P1U	3.600	0.1417		0.551	2.441	0.787	1.417	0.157	●
D106-03-03650A1 AP30P1U	3.650	0.1437		0.551	2.441	0.787	1.417	0.157	○
D106-03-03700A1 AP30P1U	3.700	0.1457		0.551	2.441	0.787	1.417	0.157	●
D106-03-03800A1 AP30P1U	3.800	0.1496		0.669	2.598	0.945	1.417	0.157	○
D106-03-03900A1 AP30P1U	3.900	0.1535		0.669	2.598	0.945	1.417	0.157	●
D106-03-03969A1 AP30P1U	3.969	0.1563	5/32"	0.669	2.598	0.945	1.417	0.157	○
D106-03-04000A1 AP30P1U	4.000	0.1575		0.669	2.598	0.945	1.417	0.157	●
D106-03-04100A1 AP30P1U	4.100	0.1614		0.669	2.598	0.945	1.417	0.236	○
D106-03-04200A1 AP30P1U	4.200	0.1654		0.669	2.598	0.945	1.417	0.236	●
D106-03-04300A1 AP30P1U	4.300	0.1693		0.669	2.598	0.945	1.417	0.236	○
D106-03-04366A1 AP30P1U	4.366	0.1719	11/64"	0.669	2.598	0.945	1.417	0.236	○
D106-03-04400A1 AP30P1U	4.400	0.1732		0.669	2.598	0.945	1.417	0.236	○
D106-03-04500A1 AP30P1U	4.500	0.1772		0.669	2.598	0.945	1.417	0.236	●
D106-03-04600A1 AP30P1U	4.600	0.1811		0.669	2.598	0.945	1.417	0.236	○
D106-03-04650A1 AP30P1U	4.650	0.1831		0.669	2.598	0.945	1.417	0.236	○
D106-03-04700A1 AP30P1U	4.700	0.1850		0.669	2.598	0.945	1.417	0.236	○
D106-03-04763A1 AP30P1U	4.763	0.1875	3/16"	0.787	2.598	1.102	1.417	0.236	○
D106-03-04800A1 AP30P1U	4.800	0.1890		0.787	2.598	1.102	1.417	0.236	●
D106-03-04900A1 AP30P1U	4.900	0.1929		0.787	2.598	1.102	1.417	0.236	●
D106-03-05000A1 AP30P1U	5.000	0.1969		0.787	2.598	1.102	1.417	0.236	●
D106-03-05100A1 AP30P1U	5.100	0.2008		0.787	2.598	1.102	1.417	0.236	●
D106-03-05159A1 AP30P1U	5.159	0.2031	13/64"	0.787	2.598	1.102	1.417	0.236	○
D106-03-05200A1 AP30P1U	5.200	0.2047		0.787	2.598	1.102	1.417	0.236	●
D106-03-05300A1 AP30P1U	5.300	0.2087		0.787	2.598	1.102	1.417	0.236	○
D106-03-05400A1 AP30P1U	5.400	0.2126		0.787	2.598	1.102	1.417	0.236	○
D106-03-05500A1 AP30P1U	5.500	0.2165		0.787	2.598	1.102	1.417	0.236	●
D106-03-05550A1 AP30P1U	5.550	0.2185		0.787	2.598	1.102	1.417	0.236	○

Special product can be ordered

Marked: ● Stocked ○ Limited-stock

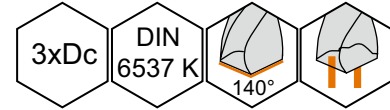
Solid Carbide Drill

Solid Carbide Drill D106 with Internal Coolant 3xDc



P	M	K	N	S	H
••	•	••	••	•	•

•• 1st choice • 2nd choice

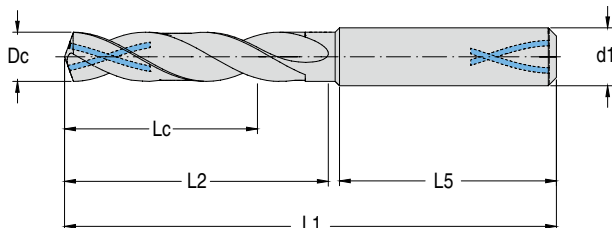


Product code	Dc(m7) mm	Dc in	Dc inch/No.	Lc in	L1 in	L2 in	L5 in	d1(h6) in	stock
D106-03-05556A1 AP30P1U	5.556	0.2187	7/32"	0.787	2.598	1.102	1.417	0.236	○
D106-03-05600A1 AP30P1U	5.600	0.2205		0.787	2.598	1.102	1.417	0.236	○
D106-03-05700A1 AP30P1U	5.700	0.2244		0.787	2.598	1.102	1.417	0.236	○
D106-03-05750A1 AP30P1U	5.750	0.2264		0.787	2.598	1.102	1.417	0.236	○
D106-03-05800A1 AP30P1U	5.800	0.2283		0.787	2.598	1.102	1.417	0.236	●
D106-03-05900A1 AP30P1U	5.900	0.2323		0.787	2.598	1.102	1.417	0.236	●
D106-03-05953A1 AP30P1U	5.953	0.2344	15/64"	0.787	2.598	1.102	1.417	0.236	○
D106-03-06000A1 AP30P1U	6.000	0.2362		0.787	2.598	1.102	1.417	0.236	●
D106-03-06100A1 AP30P1U	6.100	0.2402		0.945	3.110	1.614	1.417	0.315	○
D106-03-06200A1 AP30P1U	6.200	0.2441		0.945	3.110	1.614	1.417	0.315	○
D106-03-06300A1 AP30P1U	6.300	0.2480		0.945	3.110	1.614	1.417	0.315	○
D106-03-06350A1 AP30P1U	6.350	0.2500	1/4"	0.945	3.110	1.614	1.417	0.315	○
D106-03-06400A1 AP30P1U	6.400	0.2520		0.945	3.110	1.614	1.417	0.315	○
D106-03-06500A1 AP30P1U	6.500	0.2559		0.945	3.110	1.614	1.417	0.315	●
D106-03-06600A1 AP30P1U	6.600	0.2598		0.945	3.110	1.614	1.417	0.315	○
D106-03-06700A1 AP30P1U	6.700	0.2638		0.945	3.110	1.614	1.417	0.315	○
D106-03-06747A1 AP30P1U	6.747	0.2656	17/64"	0.945	3.110	1.614	1.417	0.315	○
D106-03-06800A1 AP30P1U	6.800	0.2677		0.945	3.110	1.614	1.417	0.315	●
D106-03-06900A1 AP30P1U	6.900	0.2717		0.945	3.110	1.614	1.417	0.315	●
D106-03-07000A1 AP30P1U	7.000	0.2756		0.945	3.110	1.614	1.417	0.315	●
D106-03-07100A1 AP30P1U	7.100	0.2795		1.142	3.110	1.614	1.417	0.315	○
D106-03-07144A1 AP30P1U	7.144	0.2813	9/32"	1.142	3.110	1.614	1.417	0.315	○
D106-03-07200A1 AP30P1U	7.200	0.2835		1.142	3.110	1.614	1.417	0.315	○
D106-03-07250A1 AP30P1U	7.250	0.2854		1.142	3.110	1.614	1.417	0.315	○
D106-03-07300A1 AP30P1U	7.300	0.2874		1.142	3.110	1.614	1.417	0.315	○
D106-03-07400A1 AP30P1U	7.400	0.2913		1.142	3.110	1.614	1.417	0.315	●
D106-03-07450A1 AP30P1U	7.450	0.2933		1.142	3.110	1.614	1.417	0.315	○
D106-03-07500A1 AP30P1U	7.500	0.2953		1.142	3.110	1.614	1.417	0.315	●
D106-03-07541A1 AP30P1U	7.541	0.2969	19/64"	1.142	3.110	1.614	1.417	0.315	○
D106-03-07550A1 AP30P1U	7.550	0.2972		1.142	3.110	1.614	1.417	0.315	○
D106-03-07600A1 AP30P1U	7.600	0.2992		1.142	3.110	1.614	1.417	0.315	○
D106-03-07700A1 AP30P1U	7.700	0.3031		1.142	3.110	1.614	1.417	0.315	○
D106-03-07800A1 AP30P1U	7.800	0.3071		1.142	3.110	1.614	1.417	0.315	●
D106-03-07900A1 AP30P1U	7.900	0.3110		1.142	3.110	1.614	1.417	0.315	●
D106-03-07938A1 AP30P1U	7.938	0.3125	5/16"	1.142	3.110	1.614	1.417	0.315	○
D106-03-08000A1 AP30P1U	8.000	0.3150		1.142	3.110	1.614	1.417	0.315	●
D106-03-08100A1 AP30P1U	8.100	0.3189		1.378	3.504	1.850	1.575	0.394	○
D106-03-08200A1 AP30P1U	8.200	0.3228		1.378	3.504	1.850	1.575	0.394	○
D106-03-08300A1 AP30P1U	8.300	0.3268		1.378	3.504	1.850	1.575	0.394	○
D106-03-08334A1 AP30P1U	8.334	0.3281	21/64"	1.378	3.504	1.850	1.575	0.394	○
D106-03-08400A1 AP30P1U	8.400	0.3307		1.378	3.504	1.850	1.575	0.394	○
D106-03-08500A1 AP30P1U	8.500	0.3346		1.378	3.504	1.850	1.575	0.394	●
D106-03-08600A1 AP30P1U	8.600	0.3386		1.378	3.504	1.850	1.575	0.394	●
D106-03-08700A1 AP30P1U	8.700	0.3425		1.378	3.504	1.850	1.575	0.394	○
D106-03-08731A1 AP30P1U	8.731	0.3437	11/32"	1.378	3.504	1.850	1.575	0.394	○
D106-03-08750A1 AP30P1U	8.750	0.3445		1.378	3.504	1.850	1.575	0.394	○
D106-03-08800A1 AP30P1U	8.800	0.3465		1.378	3.504	1.850	1.575	0.394	●
D106-03-08900A1 AP30P1U	8.900	0.3504		1.378	3.504	1.850	1.575	0.394	●

Special product can be ordered

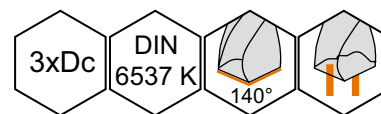
Marked: ● Stocked ○ Limited-stock

Solid Carbide Drill D106 with Internal Coolant 3xDc



P	M	K	N	S	H
••	•	••	••	•	•

● 1st choice ● 2nd choice



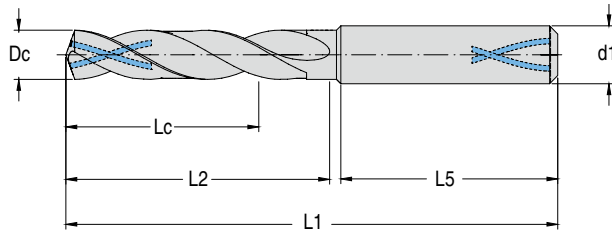
Product code	Dc(m7) mm	Dc in	Dc inch/No.	Lc in	L1 in	L2 in	L5 in	d1(h6) in	stock
D106-03-09000A1 AP30P1U	9.000	0.3543		1.378	3.504	1.850	1.575	0.394	●
D106-03-09100A1 AP30P1U	9.100	0.3583		1.378	3.504	1.850	1.575	0.394	○
D106-03-09128A1 AP30P1U	9.128	0.3594	23/64"	1.378	3.504	1.850	1.575	0.394	○
D106-03-09200A1 AP30P1U	9.200	0.3622		1.378	3.504	1.850	1.575	0.394	○
D106-03-09300A1 AP30P1U	9.300	0.3661		1.378	3.504	1.850	1.575	0.394	●
D106-03-09400A1 AP30P1U	9.400	0.3701		1.378	3.504	1.850	1.575	0.394	○
D106-03-09500A1 AP30P1U	9.500	0.3740		1.378	3.504	1.850	1.575	0.394	○
D106-03-09525A1 AP30P1U	9.525	0.3750	3/8"	1.378	3.504	1.850	1.575	0.394	○
D106-03-09550A1 AP30P1U	9.550	0.3760		1.378	3.504	1.850	1.575	0.394	○
D106-03-09600A1 AP30P1U	9.600	0.3780		1.378	3.504	1.850	1.575	0.394	○
D106-03-09700A1 AP30P1U	9.700	0.3819		1.378	3.504	1.850	1.575	0.394	○
D106-03-09800A1 AP30P1U	9.800	0.3858		1.378	3.504	1.850	1.575	0.394	●
D106-03-09900A1 AP30P1U	9.900	0.3898		1.378	3.504	1.850	1.575	0.394	●
D106-03-09922A1 AP30P1U	9.922	0.3906	25/64"	1.378	3.504	1.850	1.575	0.394	○
D106-03-10000A1 AP30P1U	10.000	0.3937		1.378	3.504	1.850	1.575	0.394	●
D106-03-10100A1 AP30P1U	10.100	0.3976		1.575	4.016	2.165	1.772	0.472	●
D106-03-10200A1 AP30P1U	10.200	0.4016		1.575	4.016	2.165	1.772	0.472	●
D106-03-10300A1 AP30P1U	10.300	0.4055		1.575	4.016	2.165	1.772	0.472	●
D106-03-10319A1 AP30P1U	10.319	0.4063	13/32"	1.575	4.016	2.165	1.772	0.472	○
D106-03-10400A1 AP30P1U	10.400	0.4094		1.575	4.016	2.165	1.772	0.472	○
D106-03-10500A1 AP30P1U	10.500	0.4134		1.575	4.016	2.165	1.772	0.472	●
D106-03-10600A1 AP30P1U	10.600	0.4173		1.575	4.016	2.165	1.772	0.472	●
D106-03-10700A1 AP30P1U	10.700	0.4213		1.575	4.016	2.165	1.772	0.472	○
D106-03-10716A1 AP30P1U	10.716	0.4219	27/64"	1.575	4.016	2.165	1.772	0.472	○
D106-03-10800A1 AP30P1U	10.800	0.4252		1.575	4.016	2.165	1.772	0.472	●
D106-03-10900A1 AP30P1U	10.900	0.4291		1.575	4.016	2.165	1.772	0.472	○
D106-03-11000A1 AP30P1U	11.000	0.4331		1.575	4.016	2.165	1.772	0.472	●
D106-03-11100A1 AP30P1U	11.100	0.4370		1.575	4.016	2.165	1.772	0.472	○
D106-03-11113A1 AP30P1U	11.113	0.4375	7/16"	1.575	4.016	2.165	1.772	0.472	○
D106-03-11200A1 AP30P1U	11.200	0.4409		1.575	4.016	2.165	1.772	0.472	○
D106-03-11300A1 AP30P1U	11.300	0.4449		1.575	4.016	2.165	1.772	0.472	○
D106-03-11400A1 AP30P1U	11.400	0.4488		1.575	4.016	2.165	1.772	0.472	○
D106-03-11500A1 AP30P1U	11.500	0.4528		1.575	4.016	2.165	1.772	0.472	○
D106-03-11509A1 AP30P1U	11.509	0.4531	29/64"	1.575	4.016	2.165	1.772	0.472	○
D106-03-11550A1 AP30P1U	11.550	0.4547		1.575	4.016	2.165	1.772	0.472	○
D106-03-11600A1 AP30P1U	11.600	0.4567		1.575	4.016	2.165	1.772	0.472	○
D106-03-11700A1 AP30P1U	11.700	0.4606		1.575	4.016	2.165	1.772	0.472	○
D106-03-11800A1 AP30P1U	11.800	0.4646		1.575	4.016	2.165	1.772	0.472	●
D106-03-11900A1 AP30P1U	11.900	0.4685		1.575	4.016	2.165	1.772	0.472	○
D106-03-11906A1 AP30P1U	11.906	0.4687	15/32"	1.575	4.016	2.165	1.772	0.472	○
D106-03-12000A1 AP30P1U	12.000	0.4724		1.575	4.016	2.165	1.772	0.472	●
D106-03-12100A1 AP30P1U	12.100	0.4764		1.693	4.213	2.362	1.772	0.551	○
D106-03-12200A1 AP30P1U	12.200	0.4803		1.693	4.213	2.362	1.772	0.551	○
D106-03-12250A1 AP30P1U	12.250	0.4823		1.693	4.213	2.362	1.772	0.551	○

Special product can be ordered

Marked: ● Stocked ○ Limited-stock

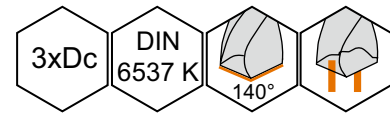
Solid Carbide Drill

Solid Carbide Drill D106 with Internal Coolant 3xDc



P	M	K	N	S	H
••	•	••	••	•	•

● 1st choice ● 2nd choice

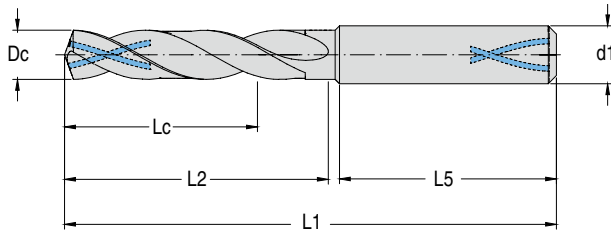


Product code	Dc(m7) mm	Dc in	Dc inch/No.	Lc in	L1 in	L2 in	L5 in	d1(h6) in	stock
D106-03-12300A1 AP30P1U	12.300	0.4843		1.693	4.213	2.362	1.772	0.551	○
D106-03-12303A1 AP30P1U	12.303	0.4844	31/64"	1.693	4.213	2.362	1.772	0.551	○
D106-03-12400A1 AP30P1U	12.400	0.4882		1.693	4.213	2.362	1.772	0.551	○
D106-03-12500A1 AP30P1U	12.500	0.4921		1.693	4.213	2.362	1.772	0.551	●
D106-03-12600A1 AP30P1U	12.600	0.4961		1.693	4.213	2.362	1.772	0.551	○
D106-03-12700A1 AP30P1U	12.700	0.5000	1/2"	1.693	4.213	2.362	1.772	0.551	○
D106-03-12750A1 AP30P1U	12.750	0.5020		1.693	4.213	2.362	1.772	0.551	○
D106-03-12800A1 AP30P1U	12.800	0.5039		1.693	4.213	2.362	1.772	0.551	○
D106-03-12900A1 AP30P1U	12.900	0.5079		1.693	4.213	2.362	1.772	0.551	○
D106-03-13000A1 AP30P1U	13.000	0.5118		1.693	4.213	2.362	1.772	0.551	●
D106-03-13100A1 AP30P1U	13.100	0.5157		1.693	4.213	2.362	1.772	0.551	○
D106-03-13200A1 AP30P1U	13.200	0.5197		1.693	4.213	2.362	1.772	0.551	●
D106-03-13300A1 AP30P1U	13.300	0.5236		1.693	4.213	2.362	1.772	0.551	○
D106-03-13400A1 AP30P1U	13.400	0.5276		1.693	4.213	2.362	1.772	0.551	○
D106-03-13494A1 AP30P1U	13.494	0.5313	17/32"	1.693	4.213	2.362	1.772	0.551	○
D106-03-13500A1 AP30P1U	13.500	0.5315		1.693	4.213	2.362	1.772	0.551	○
D106-03-13600A1 AP30P1U	13.600	0.5354		1.693	4.213	2.362	1.772	0.551	○
D106-03-13700A1 AP30P1U	13.700	0.5394		1.693	4.213	2.362	1.772	0.551	○
D106-03-13800A1 AP30P1U	13.800	0.5433		1.693	4.213	2.362	1.772	0.551	○
D106-03-13900A1 AP30P1U	13.900	0.5472		1.693	4.213	2.362	1.772	0.551	○
D106-03-14000A1 AP30P1U	14.000	0.5512		1.693	4.213	2.362	1.772	0.551	●
D106-03-14100A1 AP30P1U	14.100	0.5551		1.772	4.528	2.559	1.890	0.630	●
D106-03-14200A1 AP30P1U	14.200	0.5591		1.772	4.528	2.559	1.890	0.630	●
D106-03-14288A1 AP30P1U	14.288	0.5625	9/16"	1.772	4.528	2.559	1.890	0.630	○
D106-03-14300A1 AP30P1U	14.300	0.5630		1.772	4.528	2.559	1.890	0.630	○
D106-03-14400A1 AP30P1U	14.400	0.5669		1.772	4.528	2.559	1.890	0.630	○
D106-03-14500A1 AP30P1U	14.500	0.5709		1.772	4.528	2.559	1.890	0.630	●
D106-03-14600A1 AP30P1U	14.600	0.5748		1.772	4.528	2.559	1.890	0.630	●
D106-03-14700A1 AP30P1U	14.700	0.5787		1.772	4.528	2.559	1.890	0.630	●
D106-03-14750A1 AP30P1U	14.750	0.5807		1.772	4.528	2.559	1.890	0.630	○
D106-03-14800A1 AP30P1U	14.800	0.5827		1.772	4.528	2.559	1.890	0.630	○
D106-03-15000A1 AP30P1U	15.000	0.5906		1.772	4.528	2.559	1.890	0.630	●
D106-03-15100A1 AP30P1U	15.100	0.5945		1.772	4.528	2.559	1.890	0.630	○
D106-03-15200A1 AP30P1U	15.200	0.5984		1.772	4.528	2.559	1.890	0.630	○
D106-03-15300A1 AP30P1U	15.300	0.6024		1.772	4.528	2.559	1.890	0.630	○
D106-03-15500A1 AP30P1U	15.500	0.6102		1.772	4.528	2.559	1.890	0.630	●
D106-03-15600A1 AP30P1U	15.600	0.6142		1.772	4.528	2.559	1.890	0.630	○
D106-03-15700A1 AP30P1U	15.700	0.6181		1.772	4.528	2.559	1.890	0.630	●
D106-03-15800A1 AP30P1U	15.800	0.6220		1.772	4.528	2.559	1.890	0.630	●
D106-03-15875A1 AP30P1U	15.875	0.6250	5/8"	1.772	4.528	2.559	1.890	0.630	○
D106-03-15900A1 AP30P1U	15.900	0.6260		1.772	4.528	2.559	1.890	0.630	○
D106-03-16000A1 AP30P1U	16.000	0.6299		1.772	4.528	2.559	1.890	0.630	●

Special product can be ordered

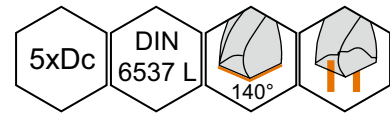
Marked: ● Stocked ○ Limited-stock

Solid Carbide Drill D106 with Internal Coolant 5xDc



P	M	K	N	S	H
••	•	••	••	•	•

•• 1st choice • 2nd choice



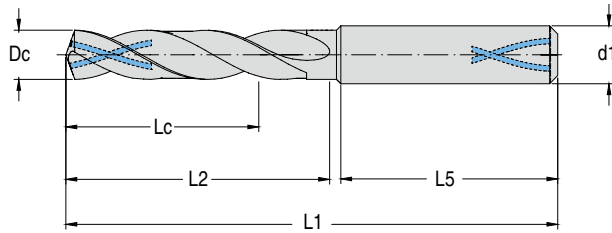
Product code	Dc(m7) mm	Dc in	Dc inch/No.	Lc in	L1 in	L2 in	L5 in	d1(h6) in	stock
D106-05-03000A1 AP30P1U	3.000	0.1181		0.906	2.598	1.102	1.417	0.157	●
D106-05-03100A1 AP30P1U	3.100	0.1220		0.906	2.598	1.102	1.417	0.157	●
D106-05-03175A1 AP30P1U	3.175	0.1250	1/8"	0.906	2.598	1.102	1.417	0.157	●
D106-05-03200A1 AP30P1U	3.200	0.1260		0.906	2.598	1.102	1.417	0.157	●
D106-05-03250A1 AP30P1U	3.250	0.1280		0.906	2.598	1.102	1.417	0.157	○
D106-05-03300A1 AP30P1U	3.300	0.1299		0.906	2.598	1.102	1.417	0.157	●
D106-05-03400A1 AP30P1U	3.400	0.1339		0.906	2.598	1.102	1.417	0.157	○
D106-05-03500A1 AP30P1U	3.500	0.1378		0.906	2.598	1.102	1.417	0.157	●
D106-05-03572A1 AP30P1U	3.572	0.1406	9/64"	0.906	2.598	1.102	1.417	0.157	●
D106-05-03600A1 AP30P1U	3.600	0.1417		0.906	2.598	1.102	1.417	0.157	●
D106-05-03650A1 AP30P1U	3.650	0.1437		0.906	2.598	1.102	1.417	0.157	○
D106-05-03700A1 AP30P1U	3.700	0.1457		0.906	2.598	1.102	1.417	0.157	●
D106-05-03800A1 AP30P1U	3.800	0.1496		1.142	2.913	1.417	1.417	0.157	○
D106-05-03900A1 AP30P1U	3.900	0.1535		1.142	2.913	1.417	1.417	0.157	●
D106-05-03969A1 AP30P1U	3.969	0.1563	5/32"	1.142	2.913	1.417	1.417	0.157	●
D106-05-04000A1 AP30P1U	4.000	0.1575		1.142	2.913	1.417	1.417	0.157	●
D106-05-04100A1 AP30P1U	4.100	0.1614		1.142	2.913	1.417	1.417	0.236	○
D106-05-04200A1 AP30P1U	4.200	0.1654		1.142	2.913	1.417	1.417	0.236	●
D106-05-04300A1 AP30P1U	4.300	0.1693		1.142	2.913	1.417	1.417	0.236	○
D106-05-04366A1 AP30P1U	4.366	0.1719	11/64"	1.142	2.913	1.417	1.417	0.236	●
D106-05-04400A1 AP30P1U	4.400	0.1732		1.142	2.913	1.417	1.417	0.236	○
D106-05-04500A1 AP30P1U	4.500	0.1772		1.142	2.913	1.417	1.417	0.236	●
D106-05-04600A1 AP30P1U	4.600	0.1811		1.142	2.913	1.417	1.417	0.236	○
D106-05-04650A1 AP30P1U	4.650	0.1831		1.142	2.913	1.417	1.417	0.236	○
D106-05-04700A1 AP30P1U	4.700	0.1850		1.142	2.913	1.417	1.417	0.236	○
D106-05-04763A1 AP30P1U	4.763	0.1875	3/16"	1.378	3.228	1.732	1.417	0.236	●
D106-05-04800A1 AP30P1U	4.800	0.1890		1.378	3.228	1.732	1.417	0.236	●
D106-05-04900A1 AP30P1U	4.900	0.1929		1.378	3.228	1.732	1.417	0.236	●
D106-05-05000A1 AP30P1U	5.000	0.1969		1.378	3.228	1.732	1.417	0.236	●
D106-05-05100A1 AP30P1U	5.100	0.2008		1.378	3.228	1.732	1.417	0.236	●
D106-05-05159A1 AP30P1U	5.159	0.2031	13/64"	1.378	3.228	1.732	1.417	0.236	○
D106-05-05200A1 AP30P1U	5.200	0.2047		1.378	3.228	1.732	1.417	0.236	●
D106-05-05300A1 AP30P1U	5.300	0.2087		1.378	3.228	1.732	1.417	0.236	○
D106-05-05400A1 AP30P1U	5.400	0.2126		1.378	3.228	1.732	1.417	0.236	○
D106-05-05500A1 AP30P1U	5.500	0.2165		1.378	3.228	1.732	1.417	0.236	●
D106-05-05550A1 AP30P1U	5.550	0.2185		1.378	3.228	1.732	1.417	0.236	○

Special product can be ordered

Marked: ● Stocked ○ Limited-stock

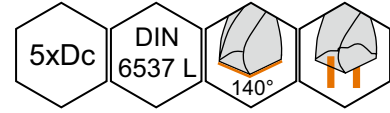
Solid Carbide Drill

Solid Carbide Drill D106 with Internal Coolant 5xDc



P	M	K	N	S	H
••	•	••	••	•	•

•• 1st choice • 2nd choice



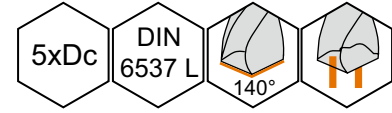
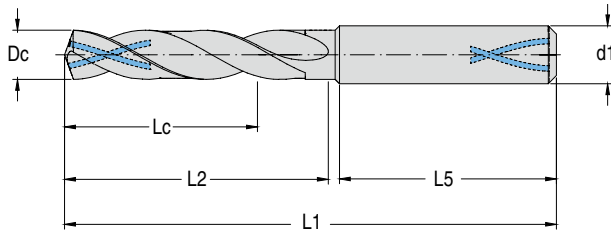
Product code	Dc(m7) mm	Dc in	Dc inch/No.	Lc in	L1 in	L2 in	L5 in	d1(h6) in	stock
D106-05-05556A1 AP30P1U	5.556	0.2187	7/32"	1.378	3.228	1.732	1.417	0.236	●
D106-05-05600A1 AP30P1U	5.600	0.2205		1.378	3.228	1.732	1.417	0.236	○
D106-05-05700A1 AP30P1U	5.700	0.2244		1.378	3.228	1.732	1.417	0.236	○
D106-05-05750A1 AP30P1U	5.750	0.2264		1.378	3.228	1.732	1.417	0.236	○
D106-05-05800A1 AP30P1U	5.800	0.2283		1.378	3.228	1.732	1.417	0.236	●
D106-05-05900A1 AP30P1U	5.900	0.2323		1.378	3.228	1.732	1.417	0.236	●
D106-05-05953A1 AP30P1U	5.953	0.2344	15/64"	1.378	3.228	1.732	1.417	0.236	●
D106-05-06000A1 AP30P1U	6.000	0.2362		1.378	3.228	1.732	1.417	0.236	●
D106-05-06100A1 AP30P1U	6.100	0.2402		1.693	3.583	2.087	1.417	0.315	○
D106-05-06200A1 AP30P1U	6.200	0.2441		1.693	3.583	2.087	1.417	0.315	○
D106-05-06300A1 AP30P1U	6.300	0.2480		1.693	3.583	2.087	1.417	0.315	○
D106-05-06350A1 AP30P1U	6.350	0.2500	1/4"	1.693	3.583	2.087	1.417	0.315	●
D106-05-06400A1 AP30P1U	6.400	0.2520		1.693	3.583	2.087	1.417	0.315	○
D106-05-06500A1 AP30P1U	6.500	0.2559		1.693	3.583	2.087	1.417	0.315	●
D106-05-06600A1 AP30P1U	6.600	0.2598		1.693	3.583	2.087	1.417	0.315	○
D106-05-06700A1 AP30P1U	6.700	0.2638		1.693	3.583	2.087	1.417	0.315	○
D106-05-06747A1 AP30P1U	6.747	0.2656	17/64"	1.693	3.583	2.087	1.417	0.315	●
D106-05-06800A1 AP30P1U	6.800	0.2677		1.693	3.583	2.087	1.417	0.315	●
D106-05-06900A1 AP30P1U	6.900	0.2717		1.693	3.583	2.087	1.417	0.315	●
D106-05-07000A1 AP30P1U	7.000	0.2756		1.693	3.583	2.087	1.417	0.315	●
D106-05-07100A1 AP30P1U	7.100	0.2795		1.693	3.583	2.087	1.417	0.315	○
D106-05-07144A1 AP30P1U	7.144	0.2813	9/32"	1.693	3.583	2.087	1.417	0.315	●
D106-05-07200A1 AP30P1U	7.200	0.2835		1.693	3.583	2.087	1.417	0.315	○
D106-05-07250A1 AP30P1U	7.250	0.2854		1.693	3.583	2.087	1.417	0.315	○
D106-05-07300A1 AP30P1U	7.300	0.2874		1.693	3.583	2.087	1.417	0.315	○
D106-05-07400A1 AP30P1U	7.400	0.2913		1.693	3.583	2.087	1.417	0.315	●
D106-05-07450A1 AP30P1U	7.450	0.2933		1.693	3.583	2.087	1.417	0.315	○
D106-05-07500A1 AP30P1U	7.500	0.2953		1.693	3.583	2.087	1.417	0.315	●
D106-05-07541A1 AP30P1U	7.541	0.2969	19/64"	1.693	3.583	2.087	1.417	0.315	○
D106-05-07550A1 AP30P1U	7.550	0.2972		1.693	3.583	2.087	1.417	0.315	○
D106-05-07600A1 AP30P1U	7.600	0.2992		1.693	3.583	2.087	1.417	0.315	○
D106-05-07700A1 AP30P1U	7.700	0.3031		1.693	3.583	2.087	1.417	0.315	○
D106-05-07800A1 AP30P1U	7.800	0.3071		1.693	3.583	2.087	1.417	0.315	●
D106-05-07900A1 AP30P1U	7.900	0.3110		1.693	3.583	2.087	1.417	0.315	●
D106-05-07938A1 AP30P1U	7.938	0.3125	5/16"	1.693	3.583	2.087	1.417	0.315	●
D106-05-08000A1 AP30P1U	8.000	0.3150		1.693	3.583	2.087	1.417	0.315	●
D106-05-08100A1 AP30P1U	8.100	0.3189		1.929	4.055	2.402	1.575	0.394	○
D106-05-08200A1 AP30P1U	8.200	0.3228		1.929	4.055	2.402	1.575	0.394	○
D106-05-08300A1 AP30P1U	8.300	0.3268		1.929	4.055	2.402	1.575	0.394	○
D106-05-08334A1 AP30P1U	8.334	0.3281	21/64"	1.929	4.055	2.402	1.575	0.394	○
D106-05-08400A1 AP30P1U	8.400	0.3307		1.929	4.055	2.402	1.575	0.394	○
D106-05-08500A1 AP30P1U	8.500	0.3346		1.929	4.055	2.402	1.575	0.394	●
D106-05-08600A1 AP30P1U	8.600	0.3386		1.929	4.055	2.402	1.575	0.394	●
D106-05-08700A1 AP30P1U	8.700	0.3425		1.929	4.055	2.402	1.575	0.394	○
D106-05-08731A1 AP30P1U	8.731	0.3437	11/32"	1.929	4.055	2.402	1.575	0.394	●
D106-05-08750A1 AP30P1U	8.750	0.3445		1.929	4.055	2.402	1.575	0.394	○
D106-05-08800A1 AP30P1U	8.800	0.3465		1.929	4.055	2.402	1.575	0.394	●
D106-05-08900A1 AP30P1U	8.900	0.3504		1.929	4.055	2.402	1.575	0.394	●

Special product can be ordered

Marked: ● Stocked ○ Limited-stock

Solid Carbide Drill D106 with Internal Coolant 5xDc

P	M	K	N	S	H
••	•	••	••	•	•
●● 1st choice ● 2nd choice					



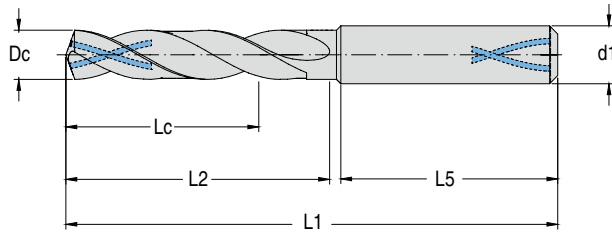
Product code	Dc(m7) mm	Dc in	Dc inch/No.	Lc in	L1 in	L2 in	L5 in	d1(h6) in	stock
D106-05-09000A1 AP30P1U	9.000	0.3543		1.929	4.055	2.402	1.575	0.394	●
D106-05-09100A1 AP30P1U	9.100	0.3583		1.929	4.055	2.402	1.575	0.394	○
D106-05-09128A1 AP30P1U	9.128	0.3594	23/64"	1.929	4.055	2.402	1.575	0.394	●
D106-05-09200A1 AP30P1U	9.200	0.3622		1.929	4.055	2.402	1.575	0.394	○
D106-05-09300A1 AP30P1U	9.300	0.3661		1.929	4.055	2.402	1.575	0.394	●
D106-05-09400A1 AP30P1U	9.400	0.3701		1.929	4.055	2.402	1.575	0.394	○
D106-05-09500A1 AP30P1U	9.500	0.3740		1.929	4.055	2.402	1.575	0.394	○
D106-05-09525A1 AP30P1U	9.525	0.3750	3/8"	1.929	4.055	2.402	1.575	0.394	●
D106-05-09550A1 AP30P1U	9.550	0.3760		1.929	4.055	2.402	1.575	0.394	○
D106-05-09600A1 AP30P1U	9.600	0.3780		1.929	4.055	2.402	1.575	0.394	○
D106-05-09700A1 AP30P1U	9.700	0.3819		1.929	4.055	2.402	1.575	0.394	○
D106-05-09800A1 AP30P1U	9.800	0.3858		1.929	4.055	2.402	1.575	0.394	●
D106-05-09900A1 AP30P1U	9.900	0.3898		1.929	4.055	2.402	1.575	0.394	●
D106-05-09922A1 AP30P1U	9.922	0.3906	25/64"	1.929	4.055	2.402	1.575	0.394	●
D106-05-10000A1 AP30P1U	10.000	0.3937		1.929	4.055	2.402	1.575	0.394	●
D106-05-10100A1 AP30P1U	10.100	0.3976		2.205	4.646	2.795	1.772	0.472	●
D106-05-10200A1 AP30P1U	10.200	0.4016		2.205	4.646	2.795	1.772	0.472	●
D106-05-10300A1 AP30P1U	10.300	0.4055		2.205	4.646	2.795	1.772	0.472	●
D106-05-10319A1 AP30P1U	10.319	0.4063	13/32"	2.205	4.646	2.795	1.772	0.472	●
D106-05-10400A1 AP30P1U	10.400	0.4094		2.205	4.646	2.795	1.772	0.472	○
D106-05-10500A1 AP30P1U	10.500	0.4134		2.205	4.646	2.795	1.772	0.472	●
D106-05-10600A1 AP30P1U	10.600	0.4173		2.205	4.646	2.795	1.772	0.472	●
D106-05-10700A1 AP30P1U	10.700	0.4213		2.205	4.646	2.795	1.772	0.472	○
D106-05-10716A1 AP30P1U	10.716	0.4219	27/64"	2.205	4.646	2.795	1.772	0.472	●
D106-05-10800A1 AP30P1U	10.800	0.4252		2.205	4.646	2.795	1.772	0.472	●
D106-05-10900A1 AP30P1U	10.900	0.4291		2.205	4.646	2.795	1.772	0.472	○
D106-05-11000A1 AP30P1U	11.000	0.4331		2.205	4.646	2.795	1.772	0.472	●
D106-05-11100A1 AP30P1U	11.100	0.4370		2.205	4.646	2.795	1.772	0.472	○
D106-05-11113A1 AP30P1U	11.113	0.4375	7/16"	2.205	4.646	2.795	1.772	0.472	○
D106-05-11200A1 AP30P1U	11.200	0.4409		2.205	4.646	2.795	1.772	0.472	○
D106-05-11300A1 AP30P1U	11.300	0.4449		2.205	4.646	2.795	1.772	0.472	○
D106-05-11400A1 AP30P1U	11.400	0.4488		2.205	4.646	2.795	1.772	0.472	○
D106-05-11500A1 AP30P1U	11.500	0.4528		2.205	4.646	2.795	1.772	0.472	○
D106-05-11509A1 AP30P1U	11.509	0.4531	29/64"	2.205	4.646	2.795	1.772	0.472	●
D106-05-11550A1 AP30P1U	11.550	0.4547		2.205	4.646	2.795	1.772	0.472	○
D106-05-11600A1 AP30P1U	11.600	0.4567		2.205	4.646	2.795	1.772	0.472	○
D106-05-11700A1 AP30P1U	11.700	0.4606		2.205	4.646	2.795	1.772	0.472	○
D106-05-11800A1 AP30P1U	11.800	0.4646		2.205	4.646	2.795	1.772	0.472	●
D106-05-11900A1 AP30P1U	11.900	0.4685		2.205	4.646	2.795	1.772	0.472	○
D106-05-11906A1 AP30P1U	11.906	0.4687	15/32"	2.205	4.646	2.795	1.772	0.472	●
D106-05-12000A1 AP30P1U	12.000	0.4724		2.205	4.646	2.795	1.772	0.472	●
D106-05-12100A1 AP30P1U	12.100	0.4764		2.362	4.882	3.031	1.772	0.551	○
D106-05-12200A1 AP30P1U	12.200	0.4803		2.362	4.882	3.031	1.772	0.551	○
D106-05-12250A1 AP30P1U	12.250	0.4823		2.362	4.882	3.031	1.772	0.551	○

Special product can be ordered

Marked: ● Stocked ○ Limited-stock

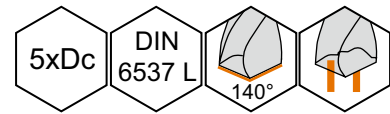
Solid Carbide Drill

Solid Carbide Drill D106 with Internal Coolant 5xDc



P	M	K	N	S	H
••	•	••	••	•	•

● 1st choice ● 2nd choice

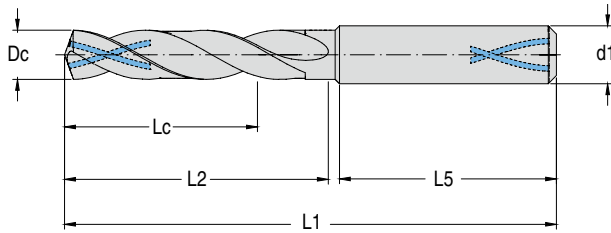


Product code	Dc(m7) mm	Dc in	Dc inch/No.	Lc in	L1 in	L2 in	L5 in	d1(h6) in	stock
D106-05-12300A1 AP30P1U	12.300	0.4843		2.362	4.882	3.031	1.772	0.551	○
D106-05-12303A1 AP30P1U	12.303	0.4844	31/64"	2.362	4.882	3.031	1.772	0.551	○
D106-05-12400A1 AP30P1U	12.400	0.4882		2.362	4.882	3.031	1.772	0.551	○
D106-05-12500A1 AP30P1U	12.500	0.4921		2.362	4.882	3.031	1.772	0.551	●
D106-05-12600A1 AP30P1U	12.600	0.4961		2.362	4.882	3.031	1.772	0.551	○
D106-05-12700A1 AP30P1U	12.700	0.5000	1/2"	2.362	4.882	3.031	1.772	0.551	●
D106-05-12750A1 AP30P1U	12.750	0.5020		2.362	4.882	3.031	1.772	0.551	○
D106-05-12800A1 AP30P1U	12.800	0.5039		2.362	4.882	3.031	1.772	0.551	○
D106-05-12900A1 AP30P1U	12.900	0.5079		2.362	4.882	3.031	1.772	0.551	○
D106-05-13000A1 AP30P1U	13.000	0.5118		2.362	4.882	3.031	1.772	0.551	●
D106-05-13100A1 AP30P1U	13.100	0.5157		2.362	4.882	3.031	1.772	0.551	○
D106-05-13200A1 AP30P1U	13.200	0.5197		2.362	4.882	3.031	1.772	0.551	●
D106-05-13300A1 AP30P1U	13.300	0.5236		2.362	4.882	3.031	1.772	0.551	○
D106-05-13400A1 AP30P1U	13.400	0.5276		2.362	4.882	3.031	1.772	0.551	○
D106-05-13494A1 AP30P1U	13.494	0.5313	17/32"	2.362	4.882	3.031	1.772	0.551	○
D106-05-13500A1 AP30P1U	13.500	0.5315		2.362	4.882	3.031	1.772	0.551	○
D106-05-13600A1 AP30P1U	13.600	0.5354		2.362	4.882	3.031	1.772	0.551	○
D106-05-13700A1 AP30P1U	13.700	0.5394		2.362	4.882	3.031	1.772	0.551	●
D106-05-13800A1 AP30P1U	13.800	0.5433		2.362	4.882	3.031	1.772	0.551	○
D106-05-13900A1 AP30P1U	13.900	0.5472		2.362	4.882	3.031	1.772	0.551	○
D106-05-14000A1 AP30P1U	14.000	0.5512		2.362	4.882	3.031	1.772	0.551	●
D106-05-14100A1 AP30P1U	14.100	0.5551		2.480	5.236	3.268	1.890	0.630	●
D106-05-14200A1 AP30P1U	14.200	0.5591		2.480	5.236	3.268	1.890	0.630	●
D106-05-14288A1 AP30P1U	14.288	0.5625	9/16"	2.480	5.236	3.268	1.890	0.630	○
D106-05-14300A1 AP30P1U	14.300	0.5630		2.480	5.236	3.268	1.890	0.630	○
D106-05-14400A1 AP30P1U	14.400	0.5669		2.480	5.236	3.268	1.890	0.630	○
D106-05-14500A1 AP30P1U	14.500	0.5709		2.480	5.236	3.268	1.890	0.630	●
D106-05-14600A1 AP30P1U	14.600	0.5748		2.480	5.236	3.268	1.890	0.630	●
D106-05-14700A1 AP30P1U	14.700	0.5787		2.480	5.236	3.268	1.890	0.630	●
D106-05-14750A1 AP30P1U	14.750	0.5807		2.480	5.236	3.268	1.890	0.630	○
D106-05-14800A1 AP30P1U	14.800	0.5827		2.480	5.236	3.268	1.890	0.630	○
D106-05-15000A1 AP30P1U	15.000	0.5906		2.480	5.236	3.268	1.890	0.630	●
D106-05-15100A1 AP30P1U	15.100	0.5945		2.480	5.236	3.268	1.890	0.630	○
D106-05-15200A1 AP30P1U	15.200	0.5984		2.480	5.236	3.268	1.890	0.630	○
D106-05-15300A1 AP30P1U	15.300	0.6024		2.480	5.236	3.268	1.890	0.630	○
D106-05-15500A1 AP30P1U	15.500	0.6102		2.480	5.236	3.268	1.890	0.630	●
D106-05-15600A1 AP30P1U	15.600	0.6142		2.480	5.236	3.268	1.890	0.630	○
D106-05-15700A1 AP30P1U	15.700	0.6181		2.480	5.236	3.268	1.890	0.630	●
D106-05-15800A1 AP30P1U	15.800	0.6220		2.480	5.236	3.268	1.890	0.630	●
D106-05-15875A1 AP30P1U	15.875	0.6250	5/8"	2.480	5.236	3.268	1.890	0.630	●
D106-05-15900A1 AP30P1U	15.900	0.6260		2.480	5.236	3.268	1.890	0.630	○
D106-05-16000A1 AP30P1U	16.000	0.6299		2.480	5.236	3.268	1.890	0.630	●

Special product can be ordered

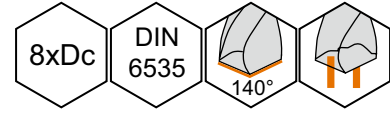
Marked: ● Stocked ○ Limited-stock

Solid Carbide Drill D108 with Internal Coolant 8xDc



P	M	K	N	S	H
••	•	••	••	•	•

● 1st choice ● 2nd choice



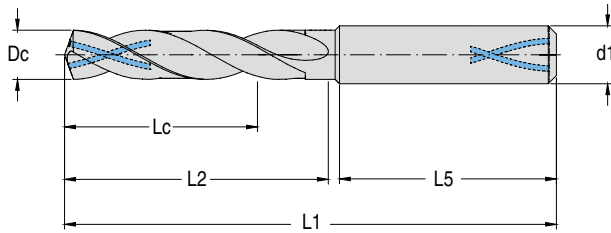
Product code	Dc(m7) mm	Dc in	Dc inch/No.	Lc in	L1 in	L2 in	L5 in	d1(h6) in	stock
D108-08-03000A1	3.000	0.1181		1.102	2.913	1.339	1.417	0.157	●
D108-08-03100A1	3.100	0.1220		1.102	2.913	1.339	1.417	0.157	●
D108-08-03175A1	3.175	0.1250	1/8"	1.102	2.913	1.339	1.417	0.157	○
D108-08-03200A1	3.200	0.1260		1.102	2.913	1.339	1.417	0.157	●
D108-08-03300A1	3.300	0.1299		1.102	2.913	1.339	1.417	0.157	●
D108-08-03400A1	3.400	0.1339		1.102	2.913	1.339	1.417	0.157	●
D108-08-03500A1	3.500	0.1378		1.102	2.913	1.339	1.417	0.157	●
D108-08-03572A1	3.572	0.1406	9/64"	1.102	2.913	1.339	1.417	0.157	○
D108-08-03600A1	3.600	0.1417		1.102	2.913	1.339	1.417	0.157	●
D108-08-03700A1	3.700	0.1457		1.102	2.913	1.339	1.417	0.157	●
D108-08-03800A1	3.800	0.1496		1.378	3.189	1.654	1.417	0.157	●
D108-08-03900A1	3.900	0.1535		1.378	3.189	1.654	1.417	0.157	●
D108-08-03969A1	3.969	0.1563	5/32"	1.378	3.189	1.654	1.417	0.157	○
D108-08-04000A1	4.000	0.1575		1.378	3.189	1.654	1.417	0.157	●
D108-08-04100A1	4.100	0.1614		1.378	3.189	1.654	1.417	0.236	●
D108-08-04200A1	4.200	0.1654		1.378	3.189	1.654	1.417	0.236	●
D108-08-04300A1	4.300	0.1693		1.457	3.189	1.732	1.417	0.236	●
D108-08-04366A1	4.366	0.1719	11/64"	1.457	3.189	1.732	1.417	0.236	○
D108-08-04400A1	4.400	0.1732		1.457	3.189	1.732	1.417	0.236	●
D108-08-04500A1	4.500	0.1772		1.457	3.189	1.732	1.417	0.236	●
D108-08-04600A1	4.600	0.1811		1.457	3.189	1.732	1.417	0.236	●
D108-08-04700A1	4.700	0.1850		1.457	3.189	1.732	1.417	0.236	●
D108-08-04763A1	4.763	0.1875	3/16"	1.693	3.819	2.047	1.417	0.236	○
D108-08-04800A1	4.800	0.1890		1.693	3.819	2.047	1.417	0.236	●
D108-08-04900A1	4.900	0.1929		1.693	3.819	2.047	1.417	0.236	●
D108-08-05000A1	5.000	0.1969		1.772	3.819	2.165	1.417	0.236	●
D108-08-05100A1	5.100	0.2008		1.772	3.819	2.165	1.417	0.236	●
D108-08-05159A1	5.159	0.2031	13/64"	1.772	3.819	2.165	1.417	0.236	○
D108-08-05200A1	5.200	0.2047		1.772	3.819	2.165	1.417	0.236	●
D108-08-05300A1	5.300	0.2087		1.772	3.819	2.165	1.417	0.236	●
D108-08-05400A1	5.400	0.2126		1.890	3.819	2.244	1.417	0.236	●
D108-08-05500A1	5.500	0.2165		1.890	3.819	2.244	1.417	0.236	●
D108-08-05556A1	5.556	0.2187	7/32"	1.890	3.819	2.244	1.417	0.236	●
D108-08-05600A1	5.600	0.2205		1.890	3.819	2.244	1.417	0.236	●
D108-08-05700A1	5.700	0.2244		1.890	3.819	2.244	1.417	0.236	●
D108-08-05800A1	5.800	0.2283		1.890	3.819	2.244	1.417	0.236	●
D108-08-05900A1	5.900	0.2323		1.890	3.819	2.244	1.417	0.236	●
D108-08-05953A1	5.953	0.2344	15/64"	1.890	3.819	2.244	1.417	0.236	○
D108-08-06000A1	6.000	0.2362		1.890	3.819	2.244	1.417	0.236	●
D108-08-06100A1	6.100	0.2402		2.087	4.173	2.520	1.417	0.315	●
D108-08-06200A1	6.200	0.2441		2.087	4.173	2.520	1.417	0.315	●

Special product can be ordered

Marked: ● Stocked ○ Limited-stock

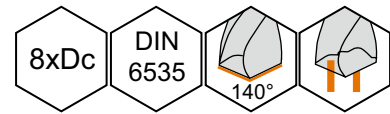
Solid Carbide Drill

Solid Carbide Drill D108 with Internal Coolant 8xDc



P	M	K	N	S	H
••	•	••	••	•	•

● 1st choice ● 2nd choice

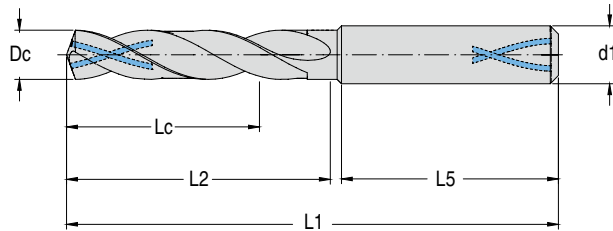


Product code	Dc(m7) mm	Dc in	Dc inch/No.	Lc in	L1 in	L2 in	L5 in	d1(h6) in	stock
D108-08-06300A1	6.300	0.2480		2.087	4.173	2.520	1.417	0.315	●
D108-08-06350A1	6.350	0.2500	1/4"	2.1260	4.173	2.598	1.417	0.315	●
D108-08-06400A1	6.400	0.2520		2.1260	4.173	2.598	1.417	0.315	●
D108-08-06500A1	6.500	0.2559		2.1654	4.173	2.598	1.417	0.315	●
D108-08-06600A1	6.600	0.2598		2.1654	4.173	2.598	1.417	0.315	●
D108-08-06700A1	6.700	0.2638		2.1654	4.173	2.598	1.417	0.315	●
D108-08-06747A1	6.747	0.2656	17/64"	2.1654	4.173	2.598	1.417	0.315	○
D108-08-06800A1	6.800	0.2677		2.1654	4.173	2.598	1.417	0.315	●
D108-08-06900A1	6.900	0.2717		2.1654	4.173	2.598	1.417	0.315	●
D108-08-07000A1	7.000	0.2756		2.1654	4.173	2.598	1.417	0.315	●
D108-08-07100A1	7.100	0.2795		2.3622	4.567	2.913	1.417	0.315	●
D108-08-07144A1	7.144	0.2813	9/32"	2.3622	4.567	2.913	1.417	0.315	○
D108-08-07200A1	7.200	0.2835		2.4409	4.567	2.913	1.417	0.315	●
D108-08-07300A1	7.300	0.2874		2.4409	4.567	2.913	1.417	0.315	●
D108-08-07400A1	7.400	0.2913		2.4409	4.567	2.913	1.417	0.315	●
D108-08-07500A1	7.500	0.2953		2.5197	4.567	2.992	1.417	0.315	●
D108-08-07541A1	7.541	0.2969	19/64"	2.5197	4.567	2.992	1.417	0.315	○
D108-08-07600A1	7.600	0.2992		2.5197	4.567	2.992	1.417	0.315	●
D108-08-07700A1	7.700	0.3031		2.5197	4.567	2.992	1.417	0.315	●
D108-08-07800A1	7.800	0.3071		2.5197	4.567	2.992	1.417	0.315	●
D108-08-07900A1	7.900	0.3110		2.5197	4.567	2.992	1.417	0.315	●
D108-08-07938A1	7.938	0.3125	5/16"	2.5197	4.567	2.992	1.417	0.315	○
D108-08-08000A1	8.000	0.3150		2.5197	4.567	2.992	1.417	0.315	●
D108-08-08100A1	8.100	0.3189		2.7559	5.472	3.465	1.575	0.394	●
D108-08-08200A1	8.200	0.3228		2.7559	5.472	3.465	1.575	0.394	●
D108-08-08300A1	8.300	0.3268		2.8346	5.472	3.465	1.575	0.394	●
D108-08-08334A1	8.334	0.3281	21/64"	2.8346	5.472	3.465	1.575	0.394	○
D108-08-08400A1	8.400	0.3307		2.8346	5.472	3.465	1.575	0.394	●
D108-08-08500A1	8.500	0.3346		2.8346	5.472	3.465	1.575	0.394	●
D108-08-08600A1	8.600	0.3386		2.8346	5.472	3.465	1.575	0.394	●
D108-08-08700A1	8.700	0.3425		2.9134	5.472	3.543	1.575	0.394	●
D108-08-08731A1	8.731	0.3437	11/32"	2.9134	5.472	3.543	1.575	0.394	○
D108-08-08800A1	8.800	0.3465		2.9134	5.472	3.543	1.575	0.394	●
D108-08-08900A1	8.900	0.3504		2.9921	5.472	3.622	1.575	0.394	●
D108-08-09000A1	9.000	0.3543		2.9921	5.472	3.622	1.575	0.394	●
D108-08-09100A1	9.100	0.3583		3.0709	5.472	3.740	1.575	0.394	●
D108-08-09128A1	9.128	0.3594	23/64"	3.0709	5.472	3.740	1.575	0.394	○
D108-08-09200A1	9.200	0.3622		3.1496	5.472	3.740	1.575	0.394	●
D108-08-09300A1	9.300	0.3661		3.1496	5.472	3.740	1.575	0.394	●

Special product can be ordered

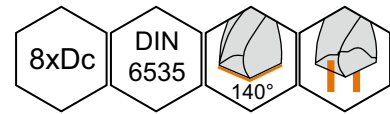
Marked: ● Stocked ○ Limited-stock

Solid Carbide Drill D108 with Internal Coolant 8xDc



P	M	K	N	S	H
••	•	••	••	•	•

•• 1st choice • 2nd choice








Product code	Dc(m7) mm	Dc in	Dc inch/No.	Lc in	L1 in	L2 in	L5 in	d1(h6) in	stock
D108-08-09400A1	9.400	0.3701		3.1496	5.472	3.740	1.575	0.394	●
D108-08-09500A1	9.500	0.3740		3.1496	5.472	3.740	1.575	0.394	●
D108-08-09525A1	9.525	0.3750	3/8"	3.1496	5.472	3.740	1.575	0.394	●
D108-08-09600A1	9.600	0.3780		3.15	5.47	3.74	1.57	0.39	●
D108-08-09700A1	9.700	0.3819		3.15	5.47	3.74	1.57	0.39	●
D108-08-09800A1	9.800	0.3858		3.15	5.47	3.74	1.57	0.39	●
D108-08-09900A1	9.900	0.3898		3.15	5.47	3.74	1.57	0.39	●
D108-08-09922A1	9.922	0.3906	25/64"	3.15	5.47	3.74	1.57	0.39	○
D108-08-10000A1	10.000	0.3937		3.15	5.47	3.74	1.57	0.39	●
D108-08-10100A1	10.100	0.3976		3.46	6.42	4.25	1.77	0.47	●
D108-08-10200A1	10.200	0.4016		3.46	6.42	4.25	1.77	0.47	●
D108-08-10300A1	10.300	0.4055		3.46	6.42	4.25	1.77	0.47	●
D108-08-10319A1	10.319	0.4063	13/32"	3.46	6.42	4.25	1.77	0.47	○
D108-08-10400A1	10.400	0.4094		3.54	6.42	4.33	1.77	0.47	●
D108-08-10500A1	10.500	0.4134		3.54	6.42	4.33	1.77	0.47	●
D108-08-10700A1	10.700	0.4213		3.54	6.42	4.33	1.77	0.47	●
D108-08-10716A1	10.716	0.4219	27/64"	3.62	6.42	4.33	1.77	0.47	○
D108-08-10800A1	10.800	0.4252		3.62	6.42	4.33	1.77	0.47	●
D108-08-10900A1	10.900	0.4291		3.70	6.42	4.41	1.77	0.47	●
D108-08-11000A1	11.000	0.4331		3.70	6.42	4.41	1.77	0.47	●
D108-08-11100A1	11.100	0.4370		3.70	6.42	4.41	1.77	0.47	●
D108-08-11113A1	11.113	0.4375	7/16"	3.70	6.42	4.41	1.77	0.47	○
D108-08-11200A1	11.200	0.4409		3.78	6.42	4.49	1.77	0.47	●
D108-08-11300A1	11.300	0.4449		3.78	6.42	4.49	1.77	0.47	●
D108-08-11500A1	11.500	0.4528		3.78	6.42	4.49	1.77	0.47	●
D108-08-11600A1	11.600	0.4567		3.78	6.42	4.49	1.77	0.47	●
D108-08-11700A1	11.700	0.4606		3.78	6.42	4.49	1.77	0.47	●
D108-08-11800A1	11.800	0.4646		3.78	6.42	4.49	1.77	0.47	●
D108-08-11900A1	11.900	0.4685		3.78	6.42	4.49	1.77	0.47	●
D108-08-11906A1	11.906	0.4687	15/32"	3.78	6.42	4.49	1.77	0.47	○
D108-08-12000A1	12.000	0.4724		3.78	6.42	4.49	1.77	0.47	●
D108-08-12303A1	12.303	0.4844	31/64"	4.17	7.17	4.92	1.77	0.55	○
D108-08-12500A1	12.500	0.4921		4.17	7.17	4.92	1.77	0.55	●
D108-08-12700A1	12.700	0.5000	1/2"	4.17	7.17	4.92	1.77	0.55	○
D108-08-13000A1	13.000	0.5118		4.33	7.17	5.12	1.77	0.55	●
D108-08-13494A1	13.494	0.5313	17/32"	4.53	7.17	5.24	1.77	0.55	○
D108-08-13500A1	13.500	0.5315		4.53	7.17	5.24	1.77	0.55	●
D108-08-14000A1	14.000	0.5512		4.69	7.17	5.24	1.77	0.55	●
D108-08-14288A1	14.288	0.5625	9/16"	4.80	8.03	5.51	1.89	0.63	○
D108-08-14500A1	14.500	0.5709		4.88	8.03	5.51	1.89	0.63	●
D108-08-15000A1	15.000	0.5906		5.04	8.03	5.63	1.89	0.63	●
D108-08-15500A1	15.500	0.6102		5.20	8.03	5.91	1.89	0.63	●
D108-08-15875A1	15.875	0.6250	5/8"	5.28	8.03	5.91	1.89	0.63	○
D108-08-16000A1	16.000	0.6299		5.35	8.03	5.98	1.89	0.63	●

Special product can be ordered

Marked: ● Stocked ○ Limited-stock

Solid Carbide Drill

Cutting Data for D106 Solid Carbide Drill Family


Vc=Cutting speed (sfm) Feed code = feed reference table see page 329				Drilling depth		3xDc				5xDc				8xDc			
																	
				Product family				D106		D106		D106		D106		D108	
				Dia. Range(in)				0.118 ~0.788		0.118 ~ 0.630		0.118 ~0.788		0.118 ~ 0.630		0.118 ~ 0.630	
				Coolant				External coolant		Internal coolant		External coolant		Internal coolant		Internal coolant	
Workpiece material				Brinell hardness (HB)	Tensile strength Rm (PSI x1000)	Vc	Feed code	Vc	Feed code	Vc	Feed code	Vc	Feed code	Vc	Feed code		
P	Unalloyed steel	C≤0.25%	Annealed	125	62	260-330	F	300-380	F	260-330	F	300-380	F	300-380	F		
		0.25 < C≤0.55%	Annealed	190	93	230-300	E	260-330	E	230-300	E	260-330	E	260-330	E		
		0.25 < C≤0.55%	Heat-treated	210	103	230-300	E	260-330	E	230-300	E	260-330	E	260-330	E		
		C > 0.55%	Annealed	190	93	230-300	E	260-330	E	230-300	E	260-330	E	260-330	E		
		C > 0.55%	Heat-treated	300	147	170-230	D	170-230	D	170-230	D	170-230	D	170-230	D		
		Free cutting steel (short-chipping)	Annealed	220	108	260-330	F	300-380	F	260-330	F	300-380	F	300-380	F		
	Low-alloyed steel	Annealed		175	86	230-300	E	260-360	E	230-300	E	260-360	E	260-360	E		
		Heat-treated		300	147	170-230	D	200-230	D	170-230	D	200-230	D	200-230	D		
		Heat-treated		380	186	120-150	C	130-170	C	120-150	C	130-170	C	130-170	C		
		Heat-treated		430	214	100-130	B	100-130	B	100-130	B	100-130	B	100-130	B		
	High-alloyed steel and high-alloyed tool steel	Annealed		200	98	180-210	D	200-260	D	180-210	D	200-260	D	200-260	D		
		Hardened and tempered		300	147	130-170	C	130-200	C	130-170	C	130-200	C	130-200	C		
		Hardened and tempered		400	197	100-130	C	150-170	C	100-130	C	150-170	C	150-170	C		
	Stainless steel	Ferritic/martensitic, annealed		200	98	170-230	D	200-260	D	170-230	D	200-260	D	200-260	D		
		Martensitic, heat-treated		330	162	130-170	C	130-170	C	130-170	C	130-170	C	130-170	C		
M	Stainless steel	Austenitic, quench hardened		200	98			130-170	C			130-170	C	130-170	C		
		Austenitic, precipitation hardened (PH)		300	147	120-150	C	130-170	C	120-150	C	130-170	C	130-170	C		
		Austenitic/ferritic, duplex		230	113			80-120	B			80-120	B	80-120	B		
K	Malleable cast iron	Ferritic		200	98	230-300	G	230-300	G	230-300	G	230-300	G	230-300	G		
		Pearlitic		260	126	200-260	G	200-260	G	200-260	G	200-260	G	200-260	G		
	Grey cast iron	Low tensile strength		180	87	260-330	H	260-360	H	260-330	H	260-360	H	260-360	H		
		High tensile strength/austenitic		245	120	230-300	G	230-300	G	230-300	G	230-300	G	230-300	G		
	Cast iron with spheroidal graphite	Ferritic		155	75	260-330	G	260-360	H	260-330	G	260-360	H	260-360	H		
Pearlitic		265	128	200-260	F	200-260	F	200-260	F	200-260	F	200-260	F				
GGV(CGI)				230	98	200-260	F	200-260	F	200-260	F	200-260	F	200-260	F		
N	Wrought aluminium alloys	non-aging		30	-	70-980	G	100-1310	G	70-980	G	100-1310	G	100-1310	G		
		aged		100	50	70-980	G	100-1310	G	70-980	G	100-1310	G	100-1310	G		
	Cast aluminium alloys	≤ 12% Si, non-aging		75	38	50-720	H	60-790	H	50-720	H	60-790	H	60-790	H		
		≤ 12% Si, aged		90	46	50-660	H	60-660	H	50-660	H	60-660	H	60-660	H		
		> 12% Si, non-aging		130	65	40-530	G	50-590	G	40-530	G	50-590	G	50-590	G		
	Magnesium alloys			70	36												
		Copper and copper alloys (bronze/brass)	Unalloyed, electrolytic copper		100	50	40-530	C	50-560	D	40-530	C	50-560	D	50-560	D	
			Brass, bronze, red brass		90	46	40-460	E	40-460	E	40-460	E	40-460	E	40-460	E	
Cu alloys, short-chip			110	55	40-500	F	50-590	F	40-500	F	50-590	F	50-590	F			
High tensile, Ampco alloy			300	147	150-200	B	150-200	B	150-200	B	150-200	B	150-200	B			
S	Heat-resistant alloys	Fe-based	Annealed	200	98			100-130	B			100-130	B	100-130	B		
			Hardened	280	137			70-80	A			70-80	A	70-80	A		
		Ni or Co based	Annealed	250	122			70-80	B			70-100	B	70-100	B		
			Hardened	350	171			30-50	A			30-50	A	30-50	A		
			Cast	320	156			50-80	A			50-80	A	50-80	A		
	Titanium alloys	Pure titanium		200	98	100-130	B	130-170	C	100-130	B	130-170	C	130-170	C		
		α and β alloys, hardened		375	183	70-100	A	80-120	B	70-100	A	80-120	B	80-120	B		
		β alloys		410	202			30-50	A			30-50	A	30-50	A		
	Tungsten alloys			300	147			30-50	A			30-50	A	30-50	A		
	Molybdenum alloys			300	147			30-50	A			30-50	A	30-50	A		
H	Hardened steel	Hardened and tempered		50HRC	-	70-120	A	70-120	A	70-120	A	70-120	A	70-120	A		
		Hardened and tempered		55HRC	-												
		Hardened and tempered		60HRC	-												
	Chilled cast iron	Hardened and tempered		50HRC	-												


The specified cutting data are average recommended values. For special applications, adjustment is needed.


Feed Reference Table


		Feed rate f (in/rev)							
Dia. in		A	B	C	D	E	F	G	H
	0.118	0.001	0.001	0.001	0.001	0.002	0.002	0.002	0.003
	0.158	0.001	0.001	0.001	0.002	0.002	0.002	0.003	0.003
	0.197	0.001	0.001	0.001	0.002	0.002	0.002	0.003	0.004
	0.236	0.001	0.001	0.002	0.002	0.002	0.003	0.004	0.004
	0.315	0.001	0.002	0.002	0.002	0.003	0.004	0.004	0.005
	0.394	0.002	0.002	0.002	0.003	0.004	0.004	0.005	0.006
	0.473	0.002	0.002	0.003	0.004	0.004	0.005	0.006	0.006
	0.551	0.002	0.003	0.004	0.004	0.005	0.006	0.006	0.007
	0.630	0.002	0.003	0.004	0.004	0.005	0.006	0.007	0.007
0.787	0.003	0.003	0.004	0.005	0.006	0.007	0.007	0.008	

Thread Pilot Hole Diameters Before Tapping


M			
Metric ISO coarse pitch thread DIN 13 and DIN ISO 965-1			
D	D1		
Diameter	Min (in)	Max (in) 5H/6H	Diameter (in)
M4	0.1276	0.1347	0.1299
M4.5	0.1452	0.1527	0.1457
M5	0.1628	0.1706	0.1654
M6	0.1936	0.2029	0.1969
M8	0.2617	0.2721	0.2677
M9	0.3011	0.3115	0.3071
M10	0.3298	0.3416	0.3346
M11	0.3691	0.3809	0.3740
M12	0.3979	0.4111	0.4016
M14	0.4659	0.4807	0.4724
M16	0.5447	0.5594	0.5512
M18	0.6021	0.6198	0.6102
M20	0.6809	0.6986	0.6890
M22	0.7596	0.7773	0.7677


UNC			
Coarse thread ASME B1.1 standard			
D	D1		
Diameter P Gg/1"	Min (in) 2B/3B	Max (in) 2B	Diameter (in)
8-32 UNC	0.1300	0.1390	0.1378
10-24 UNC	0.1450	0.1560	0.1535
12-24 UNC	0.1710	0.1810	0.1772
1/4-20 UNC	0.1959	0.2074	0.2008
5/16-18 UNC	0.2524	0.2651	0.2598
3/8-16 UNC	0.3073	0.3214	0.3150
7/16-14 UNC	0.3602	0.3760	0.3701
1/2-13 UNC	0.4167	0.4336	0.4047
9/16-12 UNC	0.4723	0.4904	0.4803
5/8-11 UNC	0.5266	0.5460	0.5315
3/4-10 UNC	0.6417	0.6627	0.6496
7/8-9 UNC	0.7547	0.7775	0.7677


UNF			
Fine thread ASME B1.1 standard			
D	D1		
Diameter P Gg/1"	Min (in) 2B/3B	Max (in) 2B	Diameter (in)
8-36 UNF	0.1340	0.1420	0.1378
10-32 UNF	0.1560	0.1640	0.1614
12-28 UNF	0.1770	0.1860	0.1811
1/4-28 UNF	0.2113	0.2197	0.2165
5/16-24 UNF	0.2674	0.2771	0.2717
3/8-24 UNF	0.3299	0.3396	0.3346
7/16-20 UNF	0.3834	0.3949	0.3898
1/2-20 UNF	0.4459	0.4574	0.4528
9/16-18 UNF	0.5024	0.5151	0.5079
5/8-18 UNF	0.5649	0.5776	0.5709
3/4-16 UNF	0.6823	0.6964	0.6890


MF			
Metric ISO fine pitch thread DIN 13 and DIN ISO 965-1			
D	D1		
Diameter x P	Max (in) 5H/6H	Diameter (in)	
M3.5x0.35	0.1268	0.1240	
M4x0.35	0.1465	0.1437	
M4x0.5	0.1417	0.1378	
M4.5x0.5	0.1614	0.1575	
M5x0.35	0.1859	0.1831	
M5x0.5	0.1811	0.1772	
M5x0.75	0.1724	0.1654	
M5x0.5	0.2204	0.2165	
M6x0.75	0.2117	0.2067	
M7x0.5	0.2598	0.2559	
M7x0.75	0.2511	0.2461	
M8x0.5	0.2992	0.2953	
M8x0.75	0.2905	0.2854	
M8x1	0.2816	0.2756	
M9x0.75	0.3298	0.3248	
M9x1	0.3210	0.3150	
M10x0.5	0.3779	0.3740	
M10x0.75	0.3692	0.3642	
M10x1	0.3604	0.3543	
M10x1.25	0.3509	0.3445	
M11x1	0.3997	0.3937	
M12x0.5	0.4567	0.4528	
M12x1	0.4391	0.4331	
M12x1.25	0.4296	0.4232	
M12x1.5	0.4203	0.4134	
M13x1	0.4785	0.4724	
M14x0.75	0.5267	0.5197	
M14x1	0.5178	0.5118	
M14x1.25	0.5083	0.5020	
M14x1.5	0.4991	0.4921	
M15x1	0.5572	0.5512	
M15x1.5	0.5384	0.5315	
M16x0.75	0.6054	0.5984	
M16x1	0.5966	0.5906	
M16x1.25	0.5871	0.5827	
M16x1.5	0.5778	0.5709	
M17x1	0.6359	0.6299	
M18x1	0.6753	0.6693	
M18x1.5	0.6565	0.6496	
M18x2	0.6382	0.6299	
M20x1	0.7541	0.7480	
M20x1.5	0.7353	0.7283	
M20x2	0.7169	0.7087	

Thread Pilot Hole Diameters Before Forming

M	Metric ISO coarse pitch thread DIN 13 and DIN ISO 965-1
D	
Diameter	Diameter (in)
M3.5	0.1280
M4	0.1457
M5	0.1831
M6	0.2185
M8	0.2913
M10	0.3661
M12	0.4409
M14	0.5157
M16	0.5945
M18	0.6654
M20	0.7441

MF	Metric ISO fine pitch thread DIN 13 and DIN ISO 965-1
D	
Diameter x P	Diameter (in)
M4x0.5	0.1496
M5x0.5	0.1890
M6-0.5	0.2283
M6-0.75	0.2224
M7-0.75	0.2618
M8-0.75	0.3012
M8-1	0.2972
M10-0.75	0.3799
M10-1	0.3760
M10-1.25	0.3701
M12-1	0.4547
M12-1.25	0.4488
M12-1.5	0.4449
M14-1	0.5335
M14-1.5	0.5236
M16-1	0.6122
M16-1.5	0.6024
M18-1	0.6909
M18-1.5	0.6811
M20-1.5	0.7598
M20-2	0.7520
M22-1.5	0.8386

UNC	Coarse thread ASME B1.1 standard
D	
Diameter	Diameter (in)
6-32 UNC	0.1240
8-32 UNC	0.1496
10-24 UNC	0.1693
12-24 UNC	0.1969
1/4-20 UNC	0.2264
5/16-18 UNC	0.2854
3/8-16 UNC	0.3445
7/16-14 UNC	0.4055
1/2-13 UNC	0.4646
9/16-12 UNC	0.5236
5/8-11 UNC	0.5827
3/4-10 UNC	0.7047

UNF	Fine thread ASME B1.1 standard
D	
Diameter	Diameter (in)
6-40 UNF	0.1260
8-36 UNF	0.1516
10-32 UNF	0.1752
12-28 UNF	0.1988
1/4-28 UNF	0.2323
5/16-24 UNF	0.2933
3/8-24 UNF	0.3543
7/16-20 UNF	0.4134
1/2-20 UNF	0.4764
9/16-18 UNF	0.5394
5/8-18 UNF	0.6004
3/4-16 UNF	0.7244

Solid Carbide Drill